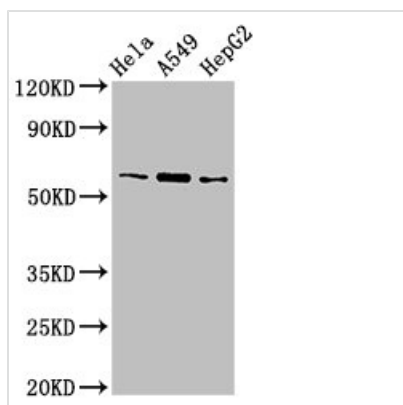




TBL1X Antibody

Product Code	CSB-PA023234LA01HU
Storage	Upon receipt, store at -20°C or -80°C. Avoid repeated freeze.
Uniprot No.	O60907
Immunogen	Recombinant Human F-box-like/WD repeat-containing protein TBL1X protein (1-300AA)
Raised In	Rabbit
Species Reactivity	Human
Tested Applications	ELISA, WB, IF; Recommended dilution: WB:1:500-1:5000, IF:1:50-1:200
Form	Liquid
Conjugate	Non-conjugated
Storage Buffer	Preservative: 0.03% Proclin 300 Constituents: 50% Glycerol, 0.01M PBS, pH 7.4
Purification Method	>95%, Protein G purified
Isotype	IgG
Clonality	Polyclonal
Alias	F-box-like/WD repeat-containing protein TBL1X (SMAP55) (Transducin beta-like protein 1X) (Transducin-beta-like protein 1, X-linked), TBL1X, TBL1
Immunogen Species	Homo sapiens (Human)
Research Area	Neuroscience
Target Names	TBL1X

Image



Western Blot

Positive WB detected in: HeLa whole cell lysate, A549 whole cell lysate, HepG2 whole cell lysate

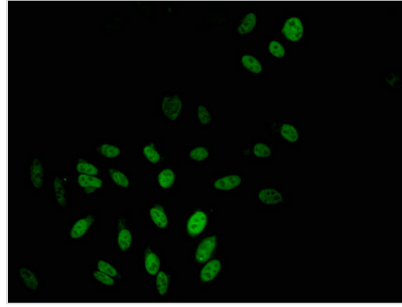
All lanes: TBL1X antibody at 3µg/ml

Secondary

Goat polyclonal to rabbit IgG at 1/50000 dilution

Predicted band size: 63, 58 kDa

Observed band size: 63 kDa



Immunofluorescent analysis of HeLa cells using CSB-PA023234LA01HU at dilution of 1:100 and Alexa Fluor 488-conjugated AffiniPure Goat Anti-Rabbit IgG(H+L)

Usage

For Research Use Only. Not for use in diagnostic or therapeutic procedures.