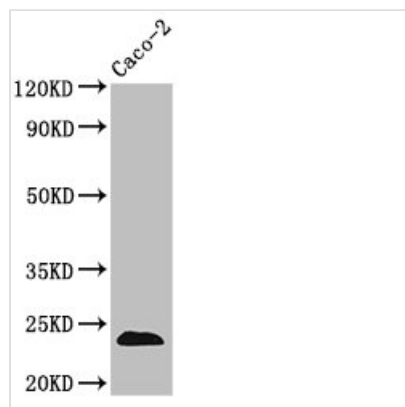




CLDN3 Antibody

Product Code	CSB-PA13119A0Rb
Storage	Upon receipt, store at -20°C or -80°C. Avoid repeated freeze.
Uniprot No.	O15551
Immunogen	Recombinant Human Claudin-3 protein (181-220AA)
Raised In	Rabbit
Species Reactivity	Human
Tested Applications	ELISA, WB, IHC; Recommended dilution: WB:1:500-1:5000, IHC:1:20-1:200
Form	Liquid
Conjugate	Non-conjugated
Storage Buffer	Preservative: 0.03% Proclin 300 Constituents: 50% Glycerol, 0.01M PBS, pH 7.4
Purification Method	>95%, Protein G purified
Isotype	IgG
Clonality	Polyclonal
Alias	Claudin-3 (Clostridium perfringens enterotoxin receptor 2) (CPE-R 2) (CPE-receptor 2) (Rat ventral prostate.1 protein homolog) (hRVP1), CLDN3, C7orf1 CPETR2
Immunogen Species	Homo sapiens (Human)
Research Area	Signal Transduction
Target Names	CLDN3

Image



Western Blot

Positive WB detected in: Caco-2 whole cell lysate

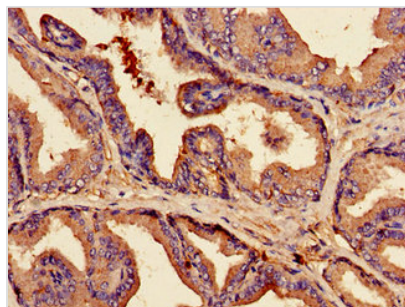
All lanes: CLDN3 antibody at 3.5µg/ml

Secondary

Goat polyclonal to rabbit IgG at 1/50000 dilution

Predicted band size: 24 kDa

Observed band size: 24 kDa



Immunohistochemistry of paraffin-embedded human prostate tissue using CSB-PA13119A0Rb at dilution of 1:100