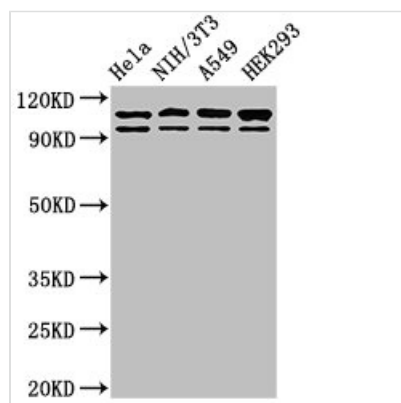




# MSH2 Antibody

<b>Product Code</b>	CSB-PA16889A0Rb
<b>Storage</b>	Upon receipt, store at -20°C or -80°C. Avoid repeated freeze.
<b>Uniprot No.</b>	P43246
<b>Immunogen</b>	Recombinant Human DNA mismatch repair protein Msh2 protein (2-254AA)
<b>Raised In</b>	Rabbit
<b>Species Reactivity</b>	Human, Mouse
<b>Tested Applications</b>	ELISA, WB, IHC, IP; Recommended dilution: WB:1:500-1:5000, IHC:1:200-1:500, IP:1:200-1:2000
<b>Form</b>	Liquid
<b>Conjugate</b>	Non-conjugated
<b>Storage Buffer</b>	Preservative: 0.03% Proclin 300 Constituents: 50% Glycerol, 0.01M PBS, pH 7.4
<b>Purification Method</b>	>95%, Protein G purified
<b>Isotype</b>	IgG
<b>Clonality</b>	Polyclonal
<b>Alias</b>	DNA mismatch repair protein Msh2 (hMSH2) (MutS protein homolog 2), MSH2
<b>Immunogen Species</b>	Homo sapiens (Human)
<b>Research Area</b>	Epigenetics and Nuclear Signaling
<b>Target Names</b>	MSH2

## Image



### Western Blot

Positive WB detected in: HeLa whole cell lysate, NIH/3T3 whole cell lysate, A549 whole cell lysate, HEK293 whole cell lysate

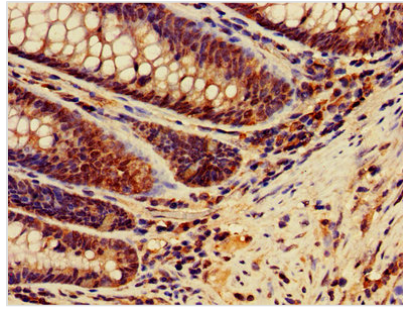
All lanes: MSH2 antibody at 2µg/ml

### Secondary

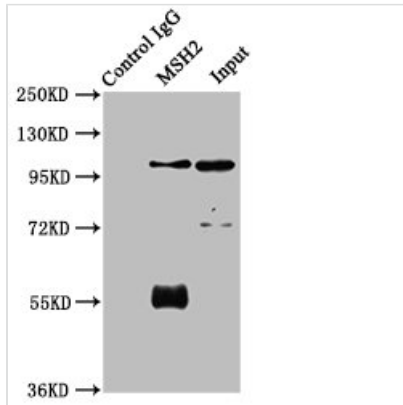
Goat polyclonal to rabbit IgG at 1/50000 dilution

Predicted band size: 105, 98 kDa

Observed band size: 105, 98 kDa



IHC image of CSB-PA16889A0Rb diluted at 1:400 and staining in paraffin-embedded human colon cancer performed on a Leica Bond<sup>TM</sup> system. After dewaxing and hydration, antigen retrieval was mediated by high pressure in a citrate buffer (pH 6.0). Section was blocked with 10% normal goat serum 30min at RT. Then primary antibody (1% BSA) was incubated at 4°C overnight. The primary is detected by a biotinylated secondary antibody and visualized using an HRP conjugated SP system.



Immunoprecipitating MSH2 in 293 whole cell lysate

Lane 1: Rabbit control IgG instead of CSB-PA16889A0Rb in 293 whole cell lysate. For western blotting, a HRP-conjugated Protein G antibody was used as the secondary antibody (1/2000)

Lane 2: CSB-PA16889A0Rb (6µg) + 293 whole cell lysate (1mg)

Lane 3: 293 whole cell lysate (20µg)

**Usage**

For Research Use Only. Not for use in diagnostic or therapeutic procedures.