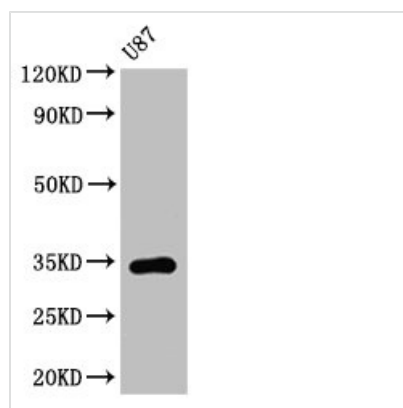




# TEF Antibody

|                            |  |
|----------------------------|--|
| <b>Product Code</b>        | CSB-PA608815LA01HU   |
| <b>Storage</b>             | Upon receipt, store at -20°C or -80°C. Avoid repeated freeze.                    |
| <b>Uniprot No.</b>         | Q10587   |
| <b>Immunogen</b>           | Recombinant Human Thyrotroph embryonic factor protein (7-303AA)                  |
| <b>Raised In</b>           | Rabbit   |
| <b>Species Reactivity</b>  | Human  |
| <b>Tested Applications</b> | ELISA, WB; Recommended dilution: WB:1:500-1:5000                                 |
| <b>Form</b>                | Liquid   |
| <b>Conjugate</b>           | Non-conjugated   |
| <b>Storage Buffer</b>      | Preservative: 0.03% Proclin 300<br>Constituents: 50% Glycerol, 0.01M PBS, pH 7.4 |
| <b>Purification Method</b> | >95%, Protein G purified   |
| <b>Isotype</b>             | IgG  |
| <b>Clonality</b>           | Polyclonal   |
| <b>Alias</b>               | Thyrotroph embryonic factor, TEF, KIAA1655                                       |
| <b>Immunogen Species</b>   | Homo sapiens (Human)   |
| <b>Research Area</b>       | Epigenetics and Nuclear Signaling  |
| <b>Target Names</b>        | TEF  |

## Image



### Western Blot

Positive WB detected in: U87 whole cell lysate

All lanes: TEF antibody at 3.2μg/ml

Secondary

Goat polyclonal to rabbit IgG at 1/50000 dilution

Predicted band size: 34, 31 kDa

Observed band size: 34 kDa