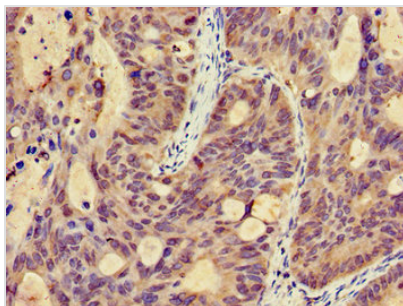




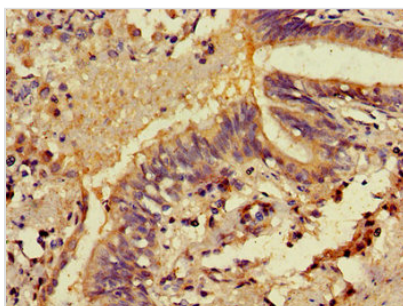
MICU2 Antibody

Product Code	CSB-PA818265LA01HU
Storage	Upon receipt, store at -20°C or -80°C. Avoid repeated freeze.
Uniprot No.	Q8IYU8
Immunogen	Recombinant Human Calcium uptake protein 2, mitochondrial protein (26-247AA)
Raised In	Rabbit
Species Reactivity	Human
Tested Applications	ELISA, IHC; Recommended dilution: IHC:1:20-1:200
Form	Liquid
Conjugate	Non-conjugated
Storage Buffer	Preservative: 0.03% Proclin 300 Constituents: 50% Glycerol, 0.01M PBS, pH 7.4
Purification Method	>95%, Protein G purified
Isotype	IgG
Clonality	Polyclonal
Alias	Calcium uptake protein 2, mitochondrial (EF-hand domain-containing family member A1), MICU2, EFHA1
Immunogen Species	Homo sapiens (Human)
Research Area	Cell Biology
Target Names	MICU2

Image



Immunohistochemistry of paraffin-embedded human colon cancer using CSB-PA818265LA01HU at dilution of 1:100



Immunohistochemistry of paraffin-embedded human lung cancer using CSB-PA818265LA01HU at dilution of 1:100



Usage

For Research Use Only. Not for use in diagnostic or therapeutic procedures.