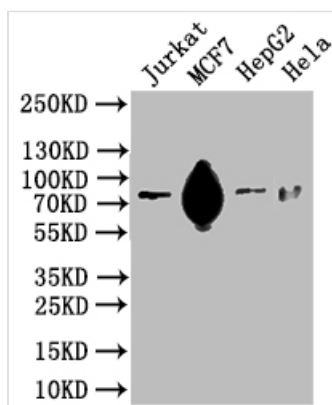




SLC20A1 Antibody

Product Code	CSB-PA823882LA01HU
Storage	Upon receipt, store at -20°C or -80°C. Avoid repeated freeze.
Uniprot No.	Q8WUM9
Immunogen	Recombinant Human Sodium-dependent phosphate transporter 1 protein (263-458AA)
Raised In	Rabbit
Species Reactivity	Human
Tested Applications	ELISA, WB, IF; Recommended dilution: WB:1:500-1:5000, IF:1:50-1:200
Form	Liquid
Conjugate	Non-conjugated
Storage Buffer	Preservative: 0.03% Proclin 300 Constituents: 50% Glycerol, 0.01M PBS, pH 7.4
Purification Method	>95%, Protein G purified
Isotype	IgG
Clonality	Polyclonal
Product Type	Polyclonal Antibody
Immunogen Species	Homo sapiens (Human)
Research Area	Microbiology
Target Names	SLC20A1

Image



Western Blot

Positive WB detected in: JK whole cell lysate, MCF7 whole cell lysate, HepG2 whole cell lysate, HeLa whole cell lysate

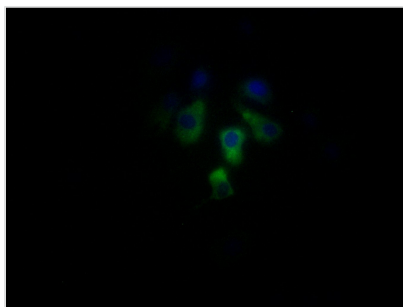
All lanes: SLC20A1 antibody at 1:500

Secondary

Goat polyclonal to rabbit IgG at 1/50000 dilution

Predicted band size: 74 kDa

Observed band size: 74 kDa



Immunofluorescent analysis of HepG2 cells using CSB-PA823882LA01HU at dilution of 1:100 and Alexa Fluor 488-conjugated AffiniPure Goat Anti-Rabbit IgG(H+L)

Usage

For Research Use Only. Not for use in diagnostic or therapeutic procedures.