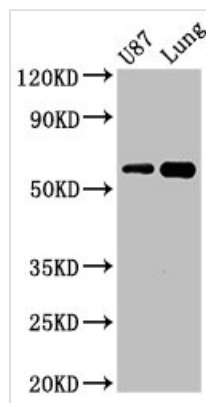




SHC3 Antibody

| | |
|----------------------------|--|
| Product Code | CSB-PA838779LA01HU |
| Storage | Upon receipt, store at -20°C or -80°C. Avoid repeated freeze. |
| Uniprot No. | Q92529 |
| Immunogen | Recombinant Human SHC-transforming protein 3 protein (323-468AA) |
| Raised In | Rabbit |
| Species Reactivity | Human, Mouse |
| Tested Applications | ELISA, WB; Recommended dilution: WB:1:500-1:5000 |
| Form | Liquid |
| Conjugate | Non-conjugated |
| Storage Buffer | Preservative: 0.03% Proclin 300 Constituents: 50% Glycerol, 0.01M PBS, pH 7.4 |
| Purification Method | >95%, Protein G purified |
| Isotype | IgG |
| Clonality | Polyclonal |
| Alias | SHC-transforming protein 3 (Neuronal Shc) (N-Shc) (Protein Rai) (SHC-transforming protein C) (Src homology 2 domain-containing-transforming protein C3) (SH2 domain protein C3), SHC3, NSHC SHCC |
| Immunogen Species | Homo sapiens (Human) |
| Research Area | Neuroscience |
| Target Names | SHC3 |

Image



Western Blot

Positive WB detected in: U87 whole cell lysate, Mouse lung tissue

All lanes: SHC3 antibody at 3μg/ml

Secondary

Goat polyclonal to rabbit IgG at 1/50000 dilution

Predicted band size: 65, 52 kDa

Observed band size: 65 kDa