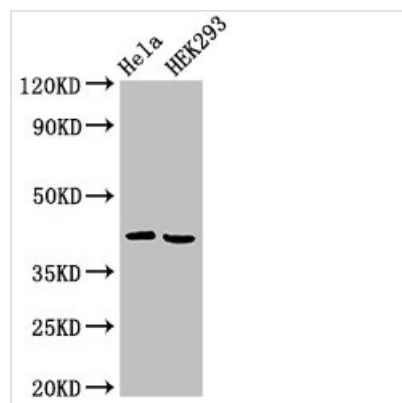




ARPC1A Antibody

| | |
|----------------------------|--|
| Product Code | CSB-PA856421LA01HU |
| Abbreviation | Actin-related protein 2/3 complex subunit 1A |
| Storage | Upon receipt, store at -20°C or -80°C. Avoid repeated freeze. |
| Uniprot No. | Q92747 |
| Immunogen | Recombinant Human Actin-related protein 2/3 complex subunit 1A protein (175-317AA) |
| Raised In | Rabbit |
| Species Reactivity | Human |
| Tested Applications | ELISA, WB, IF; Recommended dilution: WB:1:500-1:5000, IF:1:50-1:200 |
| Relevance | Probably functions as component of the Arp2/3 complex which is involved in regulation of actin polymerization and together with an activating nucleation-promoting factor (NPF) mediates the formation of branched actin networks. |
| Form | Liquid |
| Conjugate | Non-conjugated |
| Storage Buffer | Preservative: 0.03% Proclin 300 Constituents: 50% Glycerol, 0.01M PBS, pH 7.4 |
| Purification Method | >95%, Protein G purified |
| Isotype | IgG |
| Clonality | Polyclonal |
| Alias | Actin-related protein 2/3 complex subunit 1A (SOP2-like protein), ARPC1A, SOP2L |
| Immunogen Species | Homo sapiens (Human) |
| Research Area | Signal Transduction |
| Target Names | ARPC1A |

Image



Western Blot

Positive WB detected in: HeLa whole cell lysate, HEK293 whole cell lysate

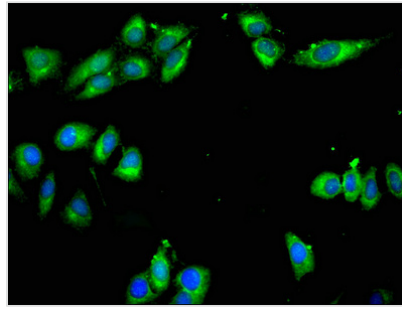
All lanes: ARPC1A antibody at 4µg/ml

Secondary

Goat polyclonal to rabbit IgG at 1/50000 dilution

Predicted band size: 42, 39 kDa

Observed band size: 42 kDa



Immunofluorescent analysis of HeLa cells using CSB-PA856421LA01HU at dilution of 1:100 and Alexa Fluor 488-conjugated AffiniPure Goat Anti-Rabbit IgG(H+L)