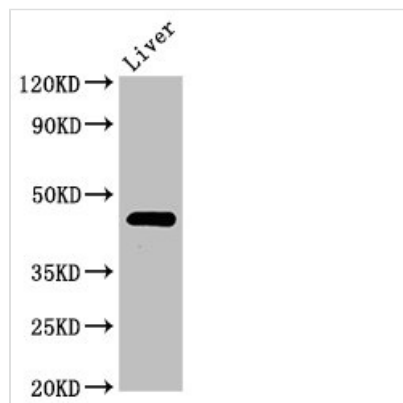




PREB Antibody

Product Code	CSB-PA867205LA01HU
Storage	Upon receipt, store at -20°C or -80°C. Avoid repeated freeze.
Uniprot No.	Q9HCU5
Immunogen	Recombinant Human Prolactin regulatory element-binding protein (98-283AA)
Raised In	Rabbit
Species Reactivity	Human, Rat
Tested Applications	ELISA, WB, IHC; Recommended dilution: WB:1:500-1:5000, IHC:1:20-1:200
Form	Liquid
Conjugate	Non-conjugated
Storage Buffer	Preservative: 0.03% Proclin 300 Constituents: 50% Glycerol, 0.01M PBS, pH 7.4
Purification Method	>95%, Protein G purified
Isotype	IgG
Clonality	Polyclonal
Alias	Prolactin regulatory element-binding protein (Mammalian guanine nucleotide exchange factor mSec12), PREB, SEC12
Immunogen Species	Homo sapiens (Human)
Research Area	Epigenetics and Nuclear Signaling
Target Names	PREB

Image



Western Blot

Positive WB detected in: Rat liver tissue

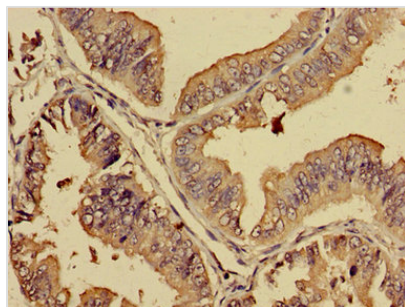
All lanes: PREB antibody at 3µg/ml

Secondary

Goat polyclonal to rabbit IgG at 1/50000 dilution

Predicted band size: 46 kDa

Observed band size: 46 kDa



Immunohistochemistry of paraffin-embedded human endometrial cancer using CSB-PA867205LA01HU at dilution of 1:100

Usage

For Research Use Only. Not for use in diagnostic or therapeutic procedures.