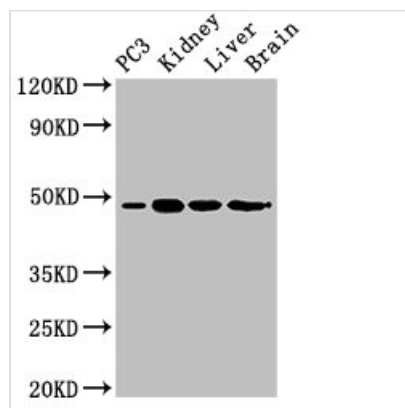




ACP6 Antibody

Product Code	CSB-PA889072LA01HU
Storage	Upon receipt, store at -20°C or -80°C. Avoid repeated freeze.
Uniprot No.	Q9NPH0
Immunogen	Recombinant Human Lysophosphatidic acid phosphatase type 6 protein (35-324AA)
Raised In	Rabbit
Species Reactivity	Human, Mouse, Rat
Tested Applications	ELISA, WB, IHC; Recommended dilution: WB:1:500-1:5000, IHC:1:20-1:200
Form	Liquid
Conjugate	Non-conjugated
Storage Buffer	Preservative: 0.03% Proclin 300 Constituents: 50% Glycerol, 0.01M PBS, pH 7.4
Purification Method	>95%, Protein G purified
Isotype	IgG
Clonality	Polyclonal
Alias	Lysophosphatidic acid phosphatase type 6 (EC 3.1.3.2) (Acid phosphatase 6, lysophosphatidic) (Acid phosphatase-like protein 1) (PACPL1), ACP6, ACPL1 LPAP
Immunogen Species	Homo sapiens (Human)
Research Area	Signal Transduction
Target Names	ACP6

Image



Western Blot

Positive WB detected in: PC-3 whole cell lysate, Mouse kidney tissue, Mouse liver tissue, Rat brain tissue

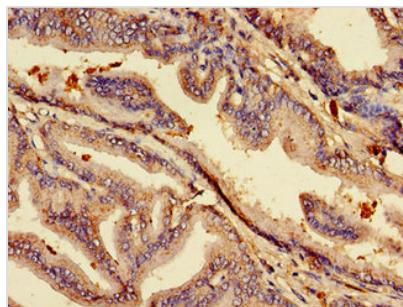
All lanes: ACP6 antibody at 3μg/ml

Secondary

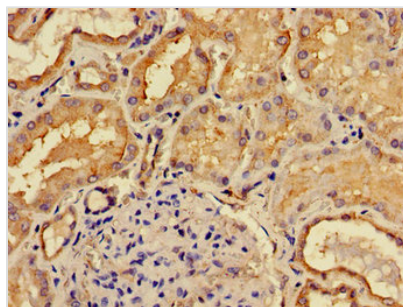
Goat polyclonal to rabbit IgG at 1/50000 dilution

Predicted band size: 49, 31 kDa

Observed band size: 49 kDa



Immunohistochemistry of paraffin-embedded human prostate tissue using CSB-PA889072LA01HU at dilution of 1:100



Immunohistochemistry of paraffin-embedded human kidney tissue using CSB-PA889072LA01HU at dilution of 1:100