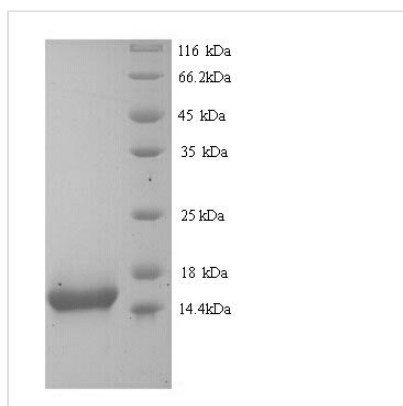




Recombinant Human KeRatin, type I cytoskeletal 10 (KRT10), partial

Product Code	CSB-YP012504HU1
Abbreviation	Recombinant Human KRT10 protein, partial
Storage	The shelf life is related to many factors, storage state, buffer ingredients, storage temperature and the stability of the protein itself. Generally, the shelf life of liquid form is 6 months at -20°C/-80°C. The shelf life of lyophilized form is 12 months at -20°C/-80°C.
Uniprot No.	P13645
Alias	Cytokeratin-10 ;CK-10Keratin-10 ;K10
Product Type	Recombinant Protein
Immunogen Species	Homo sapiens (Human)
Purity	Greater than 90% as determined by SDS-PAGE.
Sequence	EQLAEQNRKDAAEAWFNEKSKELTTEIDNNIEQISSYKSEITELRRNVQALEIELQ SQLALKQSLEASLAETEGRYCVQLSQIQAQISALEEQQLQIRAETECQNTEYQ QLLDIKIRLE
Research Area	Signal Transduction
Source	Yeast
Target Names	KRT10
Expression Region	326-443aa
Notes	Repeated freezing and thawing is not recommended. Store working aliquots at 4°C for up to one week.
Tag Info	N-terminal 6xHis-tagged
Mol. Weight	15.7kDa
Protein Length	Partial

Image



(Tris-Glycine gel) Discontinuous SDS-PAGE (reduced) with 5% enrichment gel and 15% separation gel.

**Reconstitution**

We recommend that this vial be briefly centrifuged prior to opening to bring the contents to the bottom. Please reconstitute protein in deionized sterile water to a concentration of 0.1-1.0 mg/mL. We recommend to add 5-50% of glycerol (final concentration) and aliquot for long-term storage at -20°C/-80°C. Our default final concentration of glycerol is 50%. Customers could use it as reference.

Shelf Life

The shelf life is related to many factors, storage state, buffer ingredients, storage temperature and the stability of the protein itself. Generally, the shelf life of liquid form is 6 months at -20°C/-80°C. The shelf life of lyophilized form is 12 months at -20°C/-80°C.