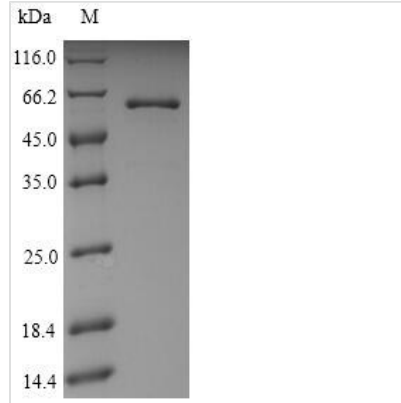


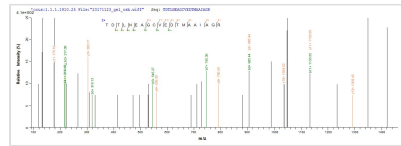


# Recombinant Helicobacter pylori Urease subunit beta (ureB)

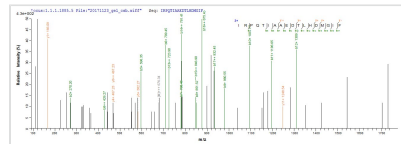
<b>Product Code</b>	CSB-YP300910HUV
<b>Relevance</b>	Staphylococcal enterotoxins cause the intoxication staphylococcal food poisoning syndrome. The illness characterized by high fever, hypotension, diarrhea, shock, and in some cases death.
<b>Storage</b>	The shelf life is related to many factors, storage state, buffer ingredients, storage temperature and the stability of the protein itself. Generally, the shelf life of liquid form is 6 months at -20°C/-80°C. The shelf life of lyophilized form is 12 months at -20°C/-80°C.
<b>Uniprot No.</b>	P69996
<b>Product Type</b>	Recombinant Proteins
<b>Immunogen Species</b>	Helicobacter pylori (strain ATCC 700392 / 26695) (Campylobacter pylori)
<b>Purity</b>	Greater than 90% as determined by SDS-PAGE.
<b>Sequence</b>	MKKISRKEYVSMYGPTTGDKVRLGDTDLIAEVEHDYTIYGEELKFGGGKTLRE GMSQSNNPSKEELDLITNALIVDYTGIIYKADIGIKDGKIAGIGKGGNKDMQDGV KNNLSVGPATEALAGEGLIVTAGGIDTHIHFISPQQIPTAFASGVTTMIGGGTGP ADGTNATTITPGRRNLKWMLRAAEEYSMNLGFLAKGNASNDASLADQIEAGAI GFKIHEDWGTTPSAINHALDVADKYDVQVAIHTDTLNEAGCVEDTMAAIAGRT MHTFHTEGAGGGHAPDIIKVAGEHNILPASTNPTIPFTVNTAEHMDMLMVCH HLDKSIKEDVQFADSRIRPQTIAAEDTLHDMGIFSITSSDSQAMGRVGEVITRT WQTADKNKKEFGRLKEEKGDNDNFRIKRYLSKYTINPAIAHGISEYVGSVEVGK VADLVLWSPAFFGVKPNMIIKGGFIALSQMGDANASIPTPQPVYYREMFAHHG KAKYDANITFVSQAAYDKGIKEELGLERQVLPVKNCRNITKKDMQFNDTTAHIE VNPETYHVFVDGKEVTSKPANKVSLAQLFSIF
<b>Source</b>	Yeast
<b>Target Names</b>	ureB
<b>Protein Names</b>	Recommended name: Urease subunit beta EC= 3.5.1.5 Alternative name(s): Urea amidohydrolase subunit beta
<b>Expression Region</b>	1-569aa
<b>Notes</b>	Repeated freezing and thawing is not recommended. Store working aliquots at 4°C for up to one week.
<b>Tag Info</b>	N-terminal 6xHis-tagged
<b>Mol. Weight</b>	63.7kDa
<b>Protein Length</b>	Full Length
<b>Image</b>	



(Tris-Glycine gel) Discontinuous SDS-PAGE (reduced) with 5% enrichment gel and 15% separation gel.



Based on the SEQUEST from database of Yeast host and target protein, the LC-MS/MS Analysis result of CSB-YP300910HUV could indicate that this peptide derived from Yeast-expressed *Helicobacter pylori* (strain ATCC 700392 / 26695) (*Campylobacter pylori*) ureB.



Based on the SEQUEST from database of Yeast host and target protein, the LC-MS/MS Analysis result of CSB-YP300910HUV could indicate that this peptide derived from Yeast-expressed *Helicobacter pylori* (strain ATCC 700392 / 26695) (*Campylobacter pylori*) ureB.

### Shelf Life

The shelf life is related to many factors, storage state, buffer ingredients, storage temperature and the stability of the protein itself.

Generally, the shelf life of liquid form is 6 months at -20°C/-80°C. The shelf life of lyophilized form is 12 months at -20°C/-80°C.