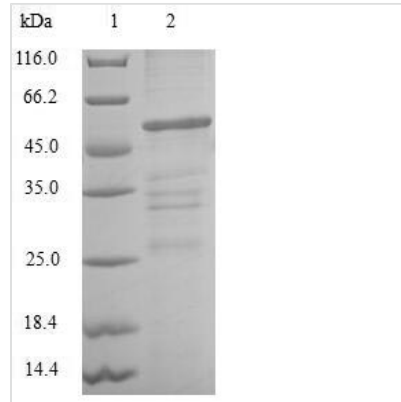




Recombinant Human Chloride intracellular channel protein 4 (CLIC4)

Product Code	CSB-EP005549HU
Relevance	Can insert into membranes and form poorly selective ion channels that may also transport chloride ions. Channel activity depends on the pH. Membrane insertion seems to be redox-regulated and may occur only under oxidizing conditions. Promotes cell-surface expression of HRH3. Has alternate cellular functions like a potential role in angiogenesis or in maintaining apical-basolateral membrane polarity during mitosis and cytokinesis. Could also promote endothelial cell proliferation and regulate endothelial morphogenesis (tubulogenesis).
Abbreviation	Recombinant Human CLIC4 protein
Storage	The shelf life is related to many factors, storage state, buffer ingredients, storage temperature and the stability of the protein itself. Generally, the shelf life of liquid form is 6 months at -20°C/-80°C. The shelf life of lyophilized form is 12 months at -20°C/-80°C.
Uniprot No.	Q9Y696
Alias	Intracellular chloride ion channel protein p64H1
Product Type	Recombinant Protein
Immunogen Species	Homo sapiens (Human)
Purity	≥ 90% as determined by SDS-PAGE.
Sequence	MALSMPNLNGLKEEDKEPLIELFVKAGSDGESIGNCPFSQRLFMILWLKGVVFSV TTVDLKRKPADLQNLAPGTHPPFITFNSEVKTDVKNKIEEFLEEVLCPPKYLKLS KHPESENTAGMDIFAKFSAYIKNSRPEANEALERGLLKTQLDEYLNLSPLDEI DENSMEDIKFSTRKFLDGNEMTLADCNLLPKLHIVKVVAKKYRNFDIPKEMTGI WRYLTNAYS RDEFTNTCPDKEVEIAYS DVAKRLTK
Research Area	Cell Biology
Source	E.coli
Target Names	CLIC4
Expression Region	1-253aa
Notes	Repeated freezing and thawing is not recommended. Store working aliquots at 4°C for up to one week.
Tag Info	N-terminal GST-tagged
Mol. Weight	55.8kDa
Protein Length	Full Length
Image	



(Tris-Glycine gel) Discontinuous SDS-PAGE (reduced) with 5% enrichment gel and 15% separation gel.

Reconstitution

We recommend that this vial be briefly centrifuged prior to opening to bring the contents to the bottom. Please reconstitute protein in deionized sterile water to a concentration of 0.1-1.0 mg/mL. We recommend to add 5-50% of glycerol (final concentration) and aliquot for long-term storage at -20°C/-80°C. Our default final concentration of glycerol is 50%. Customers could use it as reference.

Shelf Life

The shelf life is related to many factors, storage state, buffer ingredients, storage temperature and the stability of the protein itself. Generally, the shelf life of liquid form is 6 months at -20°C/-80°C. The shelf life of lyophilized form is 12 months at -20°C/-80°C.