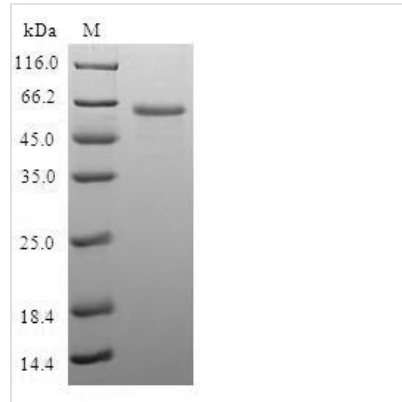




Recombinant Human LIM and senescent cell antigen-like-containing domain protein 1 (LIMS1)

Product Code	CSB-EP232922HU
Relevance	Adapter protein in a cytoplasmic complex linking beta-integrins to the actin cytoskeleton, bridges the complex to cell surface receptor tyrosine kinases and growth factor receptors. Involved in the regulation of cell survival, cell proliferation and cell differentiation.
Abbreviation	Recombinant Human LIMS1 protein
Storage	The shelf life is related to many factors, storage state, buffer ingredients, storage temperature and the stability of the protein itself. Generally, the shelf life of liquid form is 6 months at -20°C/-80°C. The shelf life of lyophilized form is 12 months at -20°C/-80°C.
Uniprot No.	P48059
Alias	Particularly interesting new Cys-His protein 1
Product Type	Recombinant Protein
Immunogen Species	Homo sapiens (Human)
Purity	Greater than 90% as determined by SDS-PAGE.
Sequence	MANALASATCERCKGGFAPAEEKIVNSNGELYHEQCFVCAQCFQQFPEGLFYEFEGRKYCEHDFQMLFAPCCHQCGEFTIGRVIKAMNNSWHPECFRCDLCQEVLADIGFVKNAGRHLCRPCHNREKARGLGKYICQKCHAIIDEQPLIFKNDPYHPDHFNCANCGKELTADARELKGELYCLPCHDKMGVPICGACRRPIEGRVVNAMGKQWHVEHFVCAKCEKPF LGHRHYERKGLAYCETHYNQLFGDVCFHENRVIEGGVVSALNKAWCVNCFACSTCNTKLT LKNKFVEFDMKPVCKKCYEKFPLELKKRLKKLAETLGRK
Research Area	Cardiovascular
Source	E.coli
Target Names	LIMS1
Protein Names	Particularly interesting new Cys-His protein 1
Expression Region	1-325aa
Notes	Repeated freezing and thawing is not recommended. Store working aliquots at 4°C for up to one week.
Tag Info	N-terminal GST-tagged
Mol. Weight	64.2 kDa
Protein Length	Full Length of BC005341
Image	



(Tris-Glycine gel) Discontinuous SDS-PAGE (reduced) with 5% enrichment gel and 15% separation gel.

Reconstitution

We recommend that this vial be briefly centrifuged prior to opening to bring the contents to the bottom. Please reconstitute protein in deionized sterile water to a concentration of 0.1-1.0 mg/mL. We recommend to add 5-50% of glycerol (final concentration) and aliquot for long-term storage at -20°C/-80°C. Our default final concentration of glycerol is 50%. Customers could use it as reference.

Shelf Life

The shelf life is related to many factors, storage state, buffer ingredients, storage temperature and the stability of the protein itself. Generally, the shelf life of liquid form is 6 months at -20°C/-80°C. The shelf life of lyophilized form is 12 months at -20°C/-80°C.