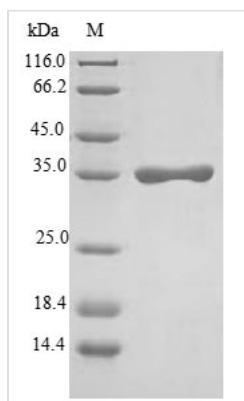




Recombinant Human Sodium/potassium-transporting ATPase subunit gamma (FXVD2)

Product Code	CSB-EP009090HU
Relevance	May be involved in forming the receptor site for cardiac glycoside binding or may modulate the transport function of the sodium ATPase.
Abbreviation	Recombinant Human FXVD2 protein
Storage	The shelf life is related to many factors, storage state, buffer ingredients, storage temperature and the stability of the protein itself. Generally, the shelf life of liquid form is 6 months at -20°C/-80°C. The shelf life of lyophilized form is 12 months at -20°C/-80°C.
Uniprot No.	P54710
Alias	FXVD domain-containing ion transport regulator 2 Sodium pump gamma chain
Product Type	Recombinant Protein
Immunogen Species	Homo sapiens (Human)
Purity	≥ 90% as determined by SDS-PAGE.
Sequence	MDRWYLGGSPPKGDVDPFYDYETVRNGGLIFAGLAFIVGLLILLSRRFRCCGN KKRRQINEDEP
Research Area	Neuroscience
Source	E.coli
Target Names	FXVD2
Expression Region	1-64aa
Notes	Repeated freezing and thawing is not recommended. Store working aliquots at 4°C for up to one week.
Tag Info	N-terminal GST-tagged
Mol. Weight	34.4kDa
Protein Length	Full Length of Isoform 2

Image



(Tris-Glycine gel) Discontinuous SDS-PAGE (reduced) with 5% enrichment gel and 15% separation gel.



Reconstitution

We recommend that this vial be briefly centrifuged prior to opening to bring the contents to the bottom. Please reconstitute protein in deionized sterile water to a concentration of 0.1-1.0 mg/mL. We recommend to add 5-50% of glycerol (final concentration) and aliquot for long-term storage at -20°C/-80°C. Our default final concentration of glycerol is 50%. Customers could use it as reference.

Shelf Life

The shelf life is related to many factors, storage state, buffer ingredients, storage temperature and the stability of the protein itself.

Generally, the shelf life of liquid form is 6 months at -20°C/-80°C. The shelf life of lyophilized form is 12 months at -20°C/-80°C.