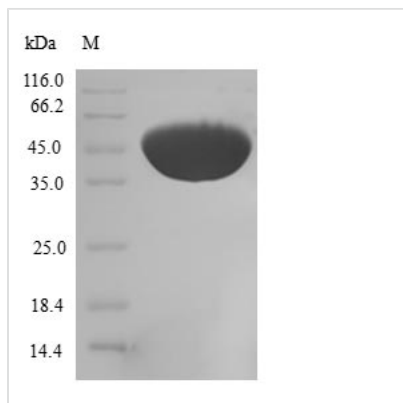




Recombinant Human Cofilin-2 (CFL2)

| | |
|--------------------------|--|
| Product Code | CSB-EP005281HU |
| Relevance | Controls reversibly actin polymerization and depolymerization in a pH-sensitive manner. Its F-actin depolymerization activity is regulated by association with CSPR3. It has the ability to bind G- and F-actin in a 1:1 ratio of cofilin to actin. It is the major component of intranuclear and cytoplasmic actin rods. Required for muscle maintenance. May play a role during the exchange of alpha-actin forms during the early postnatal remodeling of the sarcomere |
| Abbreviation | Recombinant Human CFL2 protein |
| Storage | The shelf life is related to many factors, storage state, buffer ingredients, storage temperature and the stability of the protein itself. Generally, the shelf life of liquid form is 6 months at -20°C/-80°C. The shelf life of lyophilized form is 12 months at -20°C/-80°C. |
| Uniprot No. | Q9Y281 |
| Alias | Cofilin, muscle isoform |
| Product Type | Recombinant Protein |
| Immunogen Species | Homo sapiens (Human) |
| Purity | ≥ 90% as determined by SDS-PAGE. |
| Sequence | MASGVTVNDEVIKVFNDMKVRKSSTQEEIKKRKKAVLFLCLSDDKRQIIVEEAKQ ILVGDIGDTVEDPYTSFVKLLPLNDCRYALYDATYETKESKKEDLVFIFWAPESA PLKSKMIYASSKDAIKKKFTGIKHEWQVNGLDLDDIKDRSTLGEKLGGNVVVSLEG KPL |
| Research Area | Signal Transduction |
| Source | E.coli |
| Target Names | CFL2 |
| Expression Region | 1-166aa |
| Notes | Repeated freezing and thawing is not recommended. Store working aliquots at 4°C for up to one week. |
| Tag Info | N-terminal GST-tagged |
| Mol. Weight | 45.7kDa |
| Protein Length | Full Length |

Image



(Tris-Glycine gel) Discontinuous SDS-PAGE (reduced) with 5% enrichment gel and 15% separation gel.

Reconstitution

We recommend that this vial be briefly centrifuged prior to opening to bring the contents to the bottom. Please reconstitute protein in deionized sterile water to a concentration of 0.1-1.0 mg/mL. We recommend to add 5-50% of glycerol (final concentration) and aliquot for long-term storage at -20°C/-80°C. Our default final concentration of glycerol is 50%. Customers could use it as reference.

Shelf Life

The shelf life is related to many factors, storage state, buffer ingredients, storage temperature and the stability of the protein itself. Generally, the shelf life of liquid form is 6 months at -20°C/-80°C. The shelf life of lyophilized form is 12 months at -20°C/-80°C.