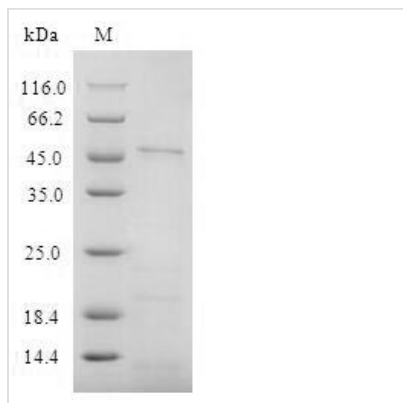


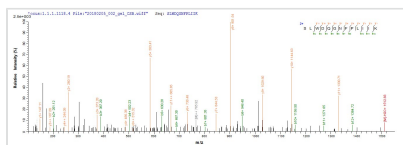


# Recombinant Human T-cell surface glycoprotein CD4 (CD4), partial

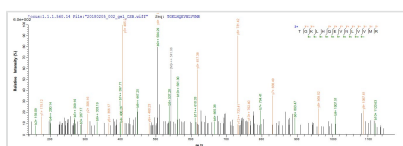
<b>Product Code</b>	CSB-CF004935HU1
<b>Relevance</b>	Accessory protein for MHC class-II antigen/T-cell receptor interaction. May regulate T-cell activation. Induces the aggregation of lipid rafts. (Microbial infection) Acts as a receptor for human immunodeficiency virus-1
<b>Abbreviation</b>	Recombinant Human CD4 protein, partial
<b>Storage</b>	The shelf life is related to many factors, storage state, buffer ingredients, storage temperature and the stability of the protein itself. Generally, the shelf life of liquid form is 6 months at -20°C/-80°C. The shelf life of lyophilized form is 12 months at -20°C/-80°C.
<b>Uniprot No.</b>	P01730
<b>Product Type</b>	Transmembrane Protein
<b>Immunogen Species</b>	Homo sapiens(Human)
<b>Purity</b>	≥ 90% as determined by SDS-PAGE.
<b>Sequence</b>	KKVVLGKKGDTVELTCTASQKKSIFHWKNSNQIKILGNQGSFLTkgpsklnd RADRRSLWDQGNFPLIINKLKIEDSDTYICEVEDQKEEVQLLVFGLTANSDTH LLQGQSLTLTLESPPGSSPSVQCRSPRGKNIQGGKTLVSQLELQDSGTWTC TVLQNQKKVEFKIDIVVLAFAQASSIVYKKEGEQVEFSFPLAFTVEKLTGSGEL WWQAERASSSKSWITFDLKNKEVSVKRVTDQPKLQMGKKLPLHLTLTPQALPQ YAGSGNLTALAEAKTGKLNHVEVNLVVMRATQLQKNLTCEVWGPTSPKLMLSL KLENKEAKVSKREKAVWVLNPEAGMWQCLLSDSGQVLLESNIKVLPTWSTPV QP
<b>Research Area</b>	Immunology
<b>Source</b>	in vitro E.coli expression system
<b>Target Names</b>	CD4
<b>Protein Names</b>	T-cell surface antigen T4/Leu-3 CD_antigen: CD4
<b>Expression Region</b>	26–396aa
<b>Notes</b>	Repeated freezing and thawing is not recommended. Store working aliquots at 4°C for up to one week.
<b>Tag Info</b>	N-terminal 6xHis-tagged
<b>Mol. Weight</b>	45.3kDa
<b>Protein Length</b>	Extracellular Domain
<b>Image</b>	



(Tris-Glycine gel) Discontinuous SDS-PAGE (reduced) with 5% enrichment gel and 15% separation gel.



Based on the SEQUEST from database of E.coli host and target protein, the LC-MS/MS Analysis result of CSB-CF004935HU1 could indicate that this peptide derived from E.coli-expressed Homo sapiens (Human) CD4.



Based on the SEQUEST from database of E.coli host and target protein, the LC-MS/MS Analysis result of CSB-CF004935HU1 could indicate that this peptide derived from E.coli-expressed Homo sapiens (Human) CD4.

## Reconstitution

We recommend that this vial be briefly centrifuged prior to opening to bring the contents to the bottom. Please reconstitute protein in deionized sterile water to a concentration of 0.1-1.0 mg/mL. We recommend to add 5-50% of glycerol (final concentration) and aliquot for long-term storage at -20°C/-80°C. Our default final concentration of glycerol is 50%. Customers could use it as reference.

## Shelf Life

The shelf life is related to many factors, storage state, buffer ingredients, storage temperature and the stability of the protein itself.

Generally, the shelf life of liquid form is 6 months at -20°C/-80°C. The shelf life of lyophilized form is 12 months at -20°C/-80°C.