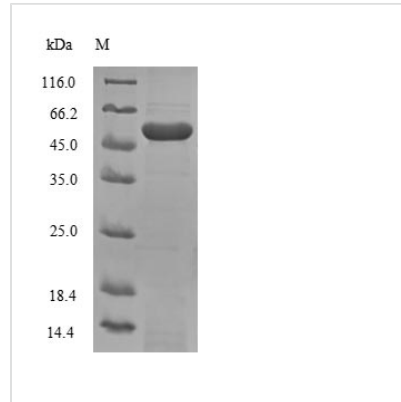




# Recombinant Mouse Prominin-1 (Prom1), Partial

<b>Product Code</b>	CSB-EP018751MO
<b>Relevance</b>	May play a role in cell differentiation, proliferation and apoptosis. Binds cholesterol in cholesterol-containing plasma membrane microdomains and may play a role in the organization of the apical plasma membrane in epithelial cells. During early retinal development acts as a key regulator of disk morphogenesis. Involved in regulation of MAPK and Akt signaling pathways. In neuroblastoma cells suppresses cell differentiation such as neurite outgrowth in a RET-dependent manner.
<b>Abbreviation</b>	Recombinant Mouse Prom1 protein, partial
<b>Storage</b>	The shelf life is related to many factors, storage state, buffer ingredients, storage temperature and the stability of the protein itself. Generally, the shelf life of liquid form is 6 months at -20°C/-80°C. The shelf life of lyophilized form is 12 months at -20°C/-80°C.
<b>Uniprot No.</b>	O54990
<b>Alias</b>	Antigen AC133 homolog Prominin-like protein 1 CD_antigen: CD133
<b>Product Type</b>	Recombinant Protein
<b>Immunogen Species</b>	Mus musculus (Mouse)
<b>Purity</b>	≥ 90% as determined by SDS-PAGE.
<b>Sequence</b>	GANVEKLLCEPYENKLLQVLDTPYLLKEQWQFYLSGMLFNNPDINMTFEQVY RDCKRGRGIYAAFQLENVVNVSDHFNIDQISENINTELENLNVNIDSIELLDNTG RKSLEDFAHSGIDTIDYSTYLKETEKSPTEVNLLTFASTLEAKANQLPEGKPKQ AFLLDVQNIIRAIHQHLLPPVQQSLNLTQRQSVWTLQQTSNKLPEKVVKILASLDS VQHFLTNNVSLIVIGETKKFGKTILGYFEHYLHWVFYAITEKMTSCKPMATAMD SAVNGILCGYVADPLN
<b>Research Area</b>	others
<b>Source</b>	E.coli
<b>Target Names</b>	Prom1
<b>Expression Region</b>	509-794aa
<b>Notes</b>	Repeated freezing and thawing is not recommended. Store working aliquots at 4°C for up to one week.
<b>Tag Info</b>	N-terminal 6XHis-SUMO-tagged
<b>Mol. Weight</b>	48.5kDa
<b>Protein Length</b>	Extracellular Domain
<b>Image</b>	



(Tris-Glycine gel) Discontinuous SDS-PAGE (reduced) with 5% enrichment gel and 15% separation gel.

### Reconstitution

We recommend that this vial be briefly centrifuged prior to opening to bring the contents to the bottom. Please reconstitute protein in deionized sterile water to a concentration of 0.1-1.0 mg/mL. We recommend to add 5-50% of glycerol (final concentration) and aliquot for long-term storage at -20°C/-80°C. Our default final concentration of glycerol is 50%. Customers could use it as reference.

### Shelf Life

The shelf life is related to many factors, storage state, buffer ingredients, storage temperature and the stability of the protein itself. Generally, the shelf life of liquid form is 6 months at -20°C/-80°C. The shelf life of lyophilized form is 12 months at -20°C/-80°C.