



Recombinant Escherichia coli Adenylate cyclase (cyaA)

Product Code	CSB-CF355580ENV
Relevance	Catalyzes the formation of the second messenger cAMP from ATP. Its transcript is probably degraded by endoribonuclease LS (rnlA), decreasing cAMP levels and the negative regulator Crp-cAMP, which then induces its own transcription again.
Abbreviation	Recombinant E.coli cyaA protein
Storage	The shelf life is related to many factors, storage state, buffer ingredients, storage temperature and the stability of the protein itself. Generally, the shelf life of liquid form is 6 months at -20°C/-80°C. The shelf life of lyophilized form is 12 months at -20°C/-80°C.
Uniprot No.	P00936
Product Type	Transmembrane Protein
Immunogen Species	Escherichia coli (strain K12)
Purity	≥ 90% as determined by SDS-PAGE.
Sequence	<p>MYLYIETLKQRLDAINQLRVDRALAAMGPAFQQVYSLPTLLHYHHPLMPGYLD GNVPKGICLYTPDETQRHYLNELELYRGMSVQDPPKGGELPITGVYTMGSTSSV GQSCSSDLDIWVCHQSWLDSEERQLLQRKCSLLENWAASLGVEVSFFLIDEN RFRHNESGSLGGEDCGSTQHILLLDEFYRTAVRLAGKRILWNMVPCEEEHY DDYVMTLYAQGVLPNEWLDLGGSLSSAEYFGASLWQLYKSIDSPYKAVLK TLLLEAYSWEYPNPRLLAKDIKQRLHDGEIVSFGGLDPYCMMLERVTEYLTAIED FTRLDLVRRCFYLVKCEKLSRERACVWRRRAVLSQLVSEWGWDEARLAMLD NRANWKIDQVREAHNELLDAMMQSYRNLRIFARRNLSVSASPQDIGVLTRKL YAAFEALPGKVTLVNPQISPDLSEPNLTFIYVPPGRANRSGWYLYNRAPNIESII SHQPLEYNRYLNKLVAWAWFNGLLTSRTRLYIKGNGIVDLPKLQEMVADVSHH FPLRLPAPTPKALYSPCEIRHLAIVNLEYDPTAAFRNQVVHFDKLDVFSFGE NQNCLVGSVDLLYRNSWNEVRTLHFNGEQSMIEALKTILGKMHQDAAPPDSV EVFCYSQHLRGLIRTRVQQLVSECIELRLSSTRQETGRFKALRVSGQWTWGLFF ERLNVSVQKLENAIEFYGAISHNKLHGLSVQVETNHVKLPAVVDGFASEGIIQFF FEETQDENGFNIIYILDESNRVEVYHHCEGSKEELVRDVSFRFYSSSHDRFTYGS SFINFNLPQFYQIVKVDGREQVIPFRTKSIGNMPPANQDHDTPLLQQYFS</p>
Research Area	others
Source	in vitro E.coli expression system
Target Names	cyaA
Protein Names	ATP pyrophosphate-lyaseAdenylyl cyclase
Expression Region	1-848aa
Notes	Repeated freezing and thawing is not recommended. Store working aliquots at 4°C for up to one week.

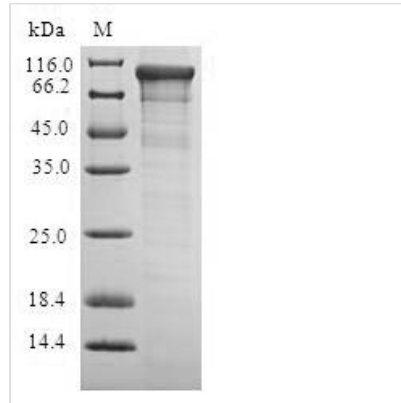


Tag Info N-terminal 6xHis-tagged

Mol. Weight 99.9kDa

Protein Length Full Length

Image



(Tris-Glycine gel) Discontinuous SDS-PAGE (reduced) with 5% enrichment gel and 15% separation gel.

Reconstitution

We recommend that this vial be briefly centrifuged prior to opening to bring the contents to the bottom. Please reconstitute protein in deionized sterile water to a concentration of 0.1-1.0 mg/mL. We recommend to add 5-50% of glycerol (final concentration) and aliquot for long-term storage at -20°C/-80°C. Our default final concentration of glycerol is 50%. Customers could use it as reference.

Shelf Life

The shelf life is related to many factors, storage state, buffer ingredients, storage temperature and the stability of the protein itself. Generally, the shelf life of liquid form is 6 months at -20°C/-80°C. The shelf life of lyophilized form is 12 months at -20°C/-80°C.