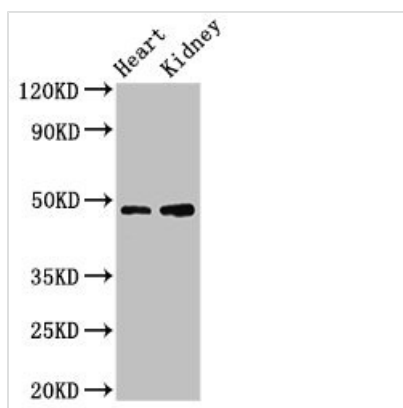




CCNE1 Antibody

| | |
|----------------------------|--|
| Product Code | CSB-PA004817LA01HU |
| Storage | Upon receipt, store at -20°C or -80°C. Avoid repeated freeze. |
| Uniprot No. | P24864 |
| Immunogen | Recombinant Human G1/S-specific cyclin-E1 protein (8-105AA) |
| Raised In | Rabbit |
| Species Reactivity | Human, Mouse |
| Tested Applications | ELISA, WB, IHC; Recommended dilution: WB:1:500-1:5000, IHC:1:20-1:200 |
| Form | Liquid |
| Conjugate | Non-conjugated |
| Storage Buffer | Preservative: 0.03% Proclin 300 Constituents: 50% Glycerol, 0.01M PBS, pH 7.4 |
| Purification Method | >95%, Protein G purified |
| Isotype | IgG |
| Clonality | Polyclonal |
| Alias | G1/S-specific cyclin-E1, CCNE1, CCNE |
| Immunogen Species | Homo sapiens (Human) |
| Research Area | Cell Biology |
| Target Names | CCNE1 |

Image



Western Blot

Positive WB detected in: Mouse heart tissue, Mouse kidney tissue

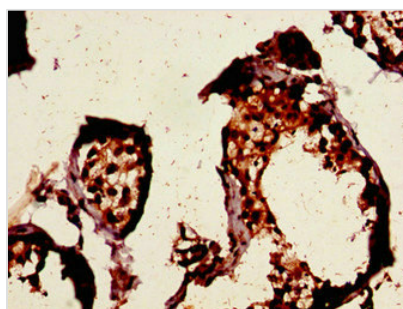
All lanes: CCNE1 antibody at 3.2µg/ml

Secondary

Goat polyclonal to rabbit IgG at 1/50000 dilution

Predicted band size: 48, 42, 46 kDa

Observed band size: 48 kDa



Immunohistochemistry of paraffin-embedded human testis tissue using CSB-PA004817LA01HU at dilution of 1:100

