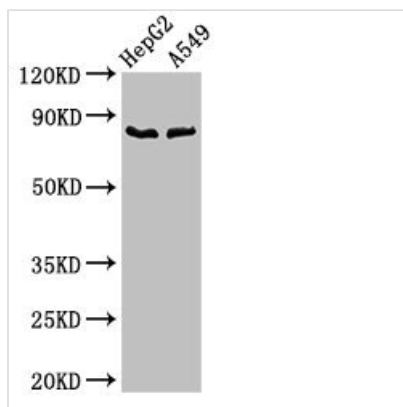




Cfb Antibody

Product Code	CSB-PA005268LA01MO
Storage	Upon receipt, store at -20°C or -80°C. Avoid repeated freeze.
Uniprot No.	P04186
Immunogen	Recombinant Mouse Complement factor B protein (23-761AA)
Raised In	Rabbit
Species Reactivity	Mouse, Human
Tested Applications	ELISA, WB; Recommended dilution: WB:1:500-1:5000
Form	Liquid
Conjugate	Non-conjugated
Storage Buffer	Preservative: 0.03% Proclin 300 Constituents: 50% Glycerol, 0.01M PBS, pH 7.4
Purification Method	>95%, Protein G purified
Isotype	IgG
Clonality	Polyclonal
Alias	Complement factor B (EC 3.4.21.47) (C3/C5 convertase) [Cleaved into: Complement factor B Ba fragment; Complement factor B Bb fragment], Cfb, Bf H2-Bf
Immunogen Species	Mus musculus (Mouse)
Research Area	Immunology
Target Names	Cfb

Image



Western Blot

Positive WB detected in: HepG2 whole cell lysate, A549 whole cell lysate

All lanes: CFB antibody at 2.8µg/ml

Secondary

Goat polyclonal to rabbit IgG at 1/50000 dilution

Predicted band size: 86 kDa

Observed band size: 86 kDa

Usage

For Research Use Only. Not for use in diagnostic or therapeutic procedures.