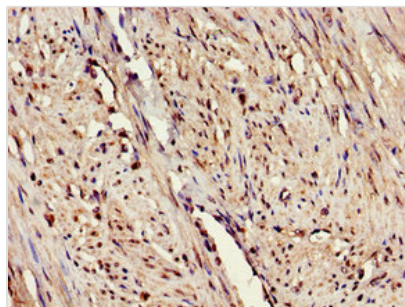




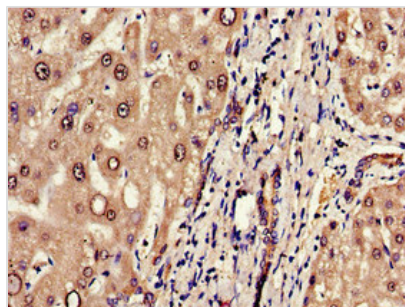
ERAP1 Antibody

Product Code	CSB-PA007760LA01HU
Storage	Upon receipt, store at -20°C or -80°C. Avoid repeated freeze.
Uniprot No.	Q9NZ08
Immunogen	Recombinant Human Endoplasmic reticulum aminopeptidase 1 protein (642-941AA)
Raised In	Rabbit
Species Reactivity	Human
Tested Applications	ELISA, WB, IHC, IF; Recommended dilution: WB:1:1000-1:5000, IHC:1:20-1:200, IF:1:50-1:200
Form	Liquid
Conjugate	Non-conjugated
Storage Buffer	Preservative: 0.03% Proclin 300 Constituents: 50% Glycerol, 0.01M PBS, pH 7.4
Purification Method	>95%, Protein G purified
Isotype	IgG
Clonality	Polyclonal
Alias	Endoplasmic reticulum aminopeptidase 1 (EC 3.4.11.-) (ARTS-1) (Adipocyte-derived leucine aminopeptidase) (A-LAP) (Aminopeptidase PILS) (Puromycin-insensitive leucyl-specific aminopeptidase) (PILS-AP) (Type 1 tumor necrosis factor receptor shedding aminopeptidase regulator), ERAP1, APPILS ARTS1 KIAA0525
Immunogen Species	Homo sapiens (Human)
Research Area	Immunology
Target Names	ERAP1

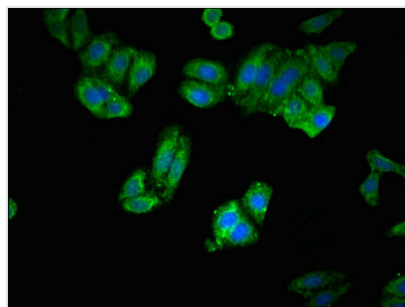
Image



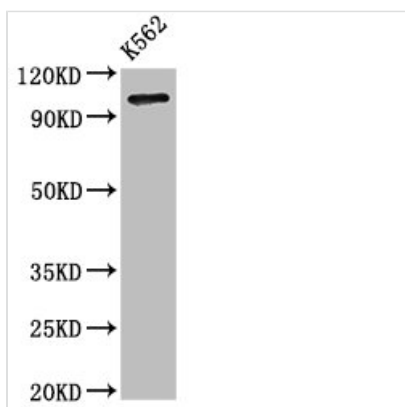
Immunohistochemistry of paraffin-embedded human endometrial cancer using CSB-PA007760LA01HU at dilution of 1:100



Immunohistochemistry of paraffin-embedded human liver tissue using CSB-PA007760LA01HU at dilution of 1:100



Immunofluorescent analysis of HepG2 cells using CSB-PA007760LA01HU at dilution of 1:100 and Alexa Fluor 488-conjugated AffiniPure Goat Anti-Rabbit IgG(H+L)



Western Blot

Positive WB detected in: K562 whole cell lysate

All lanes: ERAP1 antibody at 3.2 μ g/ml

Secondary

Goat polyclonal to rabbit IgG at 1/50000 dilution

Predicted band size: 108 kDa

Observed band size: 108 kDa

Usage

For Research Use Only. Not for use in diagnostic or therapeutic procedures.