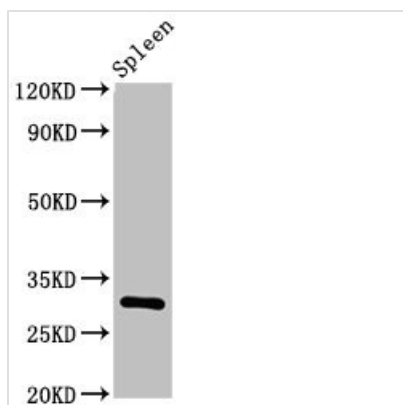




# IL2RA Antibody

<b>Product Code</b>	CSB-PA011649LA01HU
<b>Storage</b>	Upon receipt, store at -20°C or -80°C. Avoid repeated freeze.
<b>Uniprot No.</b>	P01589
<b>Immunogen</b>	Recombinant Human Interleukin-2 receptor subunit alpha protein (22-185AA)
<b>Raised In</b>	Rabbit
<b>Species Reactivity</b>	Human, Rat
<b>Tested Applications</b>	ELISA, WB, IHC, IF; Recommended dilution: WB:1:500-1:5000, IHC:1:20-1:200, IF:1:50-1:200
<b>Form</b>	Liquid
<b>Conjugate</b>	Non-conjugated
<b>Storage Buffer</b>	Preservative: 0.03% Proclin 300 Constituents: 50% Glycerol, 0.01M PBS, pH 7.4
<b>Purification Method</b>	>95%, Protein G purified
<b>Isotype</b>	IgG
<b>Clonality</b>	Polyclonal
<b>Alias</b>	Interleukin-2 receptor subunit alpha (IL-2 receptor subunit alpha) (IL-2-RA) (IL-2R subunit alpha) (IL2-RA) (TAC antigen) (p55) (CD antigen CD25), IL2RA
<b>Immunogen Species</b>	Homo sapiens (Human)
<b>Research Area</b>	Immunology
<b>Target Names</b>	IL2RA

## Image



### Western Blot

Positive WB detected in: Rat spleen tissue

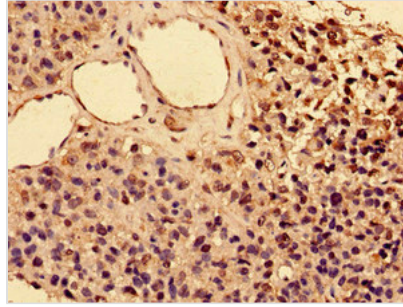
All lanes: IL2RA antibody at 3.2µg/ml

Secondary

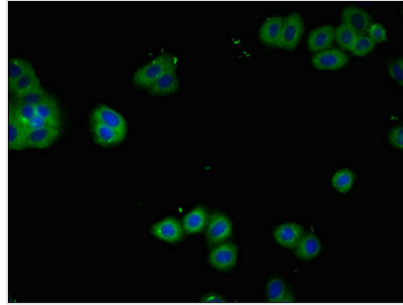
Goat polyclonal to rabbit IgG at 1/50000 dilution

Predicted band size: 31 kDa

Observed band size: 31 kDa



Immunohistochemistry of paraffin-embedded human glioma using CSB-PA011649LA01HU at dilution of 1:100



Immunofluorescent analysis of HepG2 cells using CSB-PA011649LA01HU at dilution of 1:100 and Alexa Fluor 488-conjugated AffiniPure Goat Anti-Rabbit IgG(H+L)

## Usage

For Research Use Only. Not for use in diagnostic or therapeutic procedures.