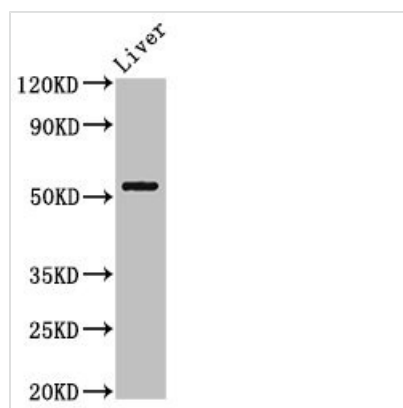




# MEIS2 Antibody

<b>Product Code</b>	CSB-PA013687LA01HU
<b>Storage</b>	Upon receipt, store at -20°C or -80°C. Avoid repeated freeze.
<b>Uniprot No.</b>	O14770
<b>Immunogen</b>	Recombinant Human Homeobox protein Meis2 protein (377-470AA)
<b>Raised In</b>	Rabbit
<b>Species Reactivity</b>	Human, Mouse
<b>Tested Applications</b>	ELISA, WB, IF; Recommended dilution: WB:1:500-1:5000, IF:1:50-1:200
<b>Form</b>	Liquid
<b>Conjugate</b>	Non-conjugated
<b>Storage Buffer</b>	Preservative: 0.03% Proclin 300 Constituents: 50% Glycerol, 0.01M PBS, pH 7.4
<b>Purification Method</b>	>95%, Protein G purified
<b>Isotype</b>	IgG
<b>Clonality</b>	Polyclonal
<b>Alias</b>	Homeobox protein Meis2 (Meis1-related protein 1), MEIS2, MRG1
<b>Immunogen Species</b>	Homo sapiens (Human)
<b>Research Area</b>	Neuroscience
<b>Target Names</b>	MEIS2

## Image



### Western Blot

Positive WB detected in: Mouse liver tissue

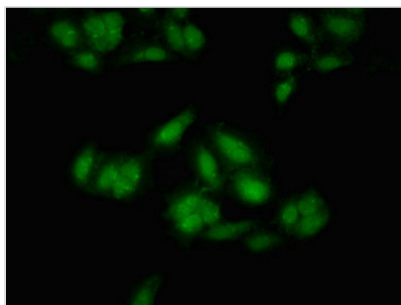
All lanes: MEIS2 antibody at 3µg/ml

### Secondary

Goat polyclonal to rabbit IgG at 1/50000 dilution

Predicted band size: 52, 44, 33, 34, 42, 43 kDa

Observed band size: 52 kDa



Immunofluorescent analysis of HeLa cells using CSB-PA013687LA01HU at dilution of 1:100 and Alexa Fluor 488-conjugated AffiniPure Goat Anti-Rabbit IgG(H+L)