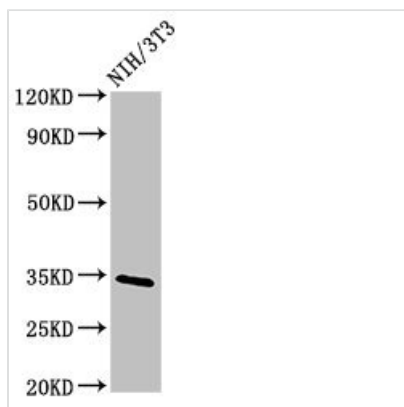




NTHL1 Antibody

Product Code	CSB-PA016125LA01HU
Storage	Upon receipt, store at -20°C or -80°C. Avoid repeated freeze.
Uniprot No.	P78549
Immunogen	Recombinant Human Endonuclease III-like protein 1 protein (31-312AA)
Raised In	Rabbit
Species Reactivity	Human, Mouse
Tested Applications	ELISA, WB, IHC, IF; Recommended dilution: WB:1:500-1:5000, IF:1:50-1:200
Form	Liquid
Conjugate	Non-conjugated
Storage Buffer	Preservative: 0.03% Proclin 300 Constituents: 50% Glycerol, 0.01M PBS, pH 7.4
Purification Method	>95%, Protein G purified
Isotype	IgG
Clonality	Polyclonal
Alias	Endonuclease III-like protein 1 (hNTH1) (EC 3.2.2.-) (EC 4.2.99.18) (Bifunctional DNA N-glycosylase/DNA-(apurinic or apyrimidinic site) lyase) (DNA glycosylase/AP lyase), NTHL1, NTH1 OCTS3
Immunogen Species	Homo sapiens (Human)
Research Area	Epigenetics and Nuclear Signaling
Target Names	NTHL1

Image



Western Blot

Positive WB detected in: NIH/3T3 whole cell lysate

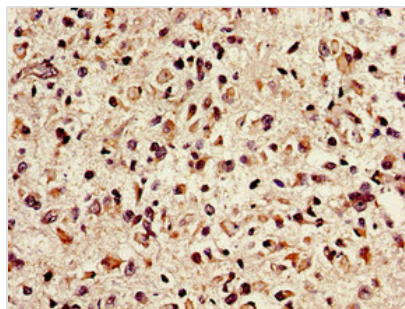
All lanes: NTHL1 antibody at 4µg/ml

Secondary

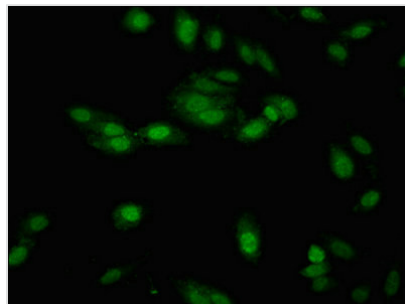
Goat polyclonal to rabbit IgG at 1/50000 dilution

Predicted band size: 35, 34, 33 kDa

Observed band size: 35 kDa



Immunohistochemistry of paraffin-embedded human glioma using CSB-PA016125LA01HU at dilution of 1:100



Immunofluorescent analysis of HeLa cells using CSB-PA016125LA01HU at dilution of 1:100 and Alexa Fluor 488-conjugated AffiniPure Goat Anti-Rabbit IgG(H+L)

Usage

For Research Use Only. Not for use in diagnostic or therapeutic procedures.