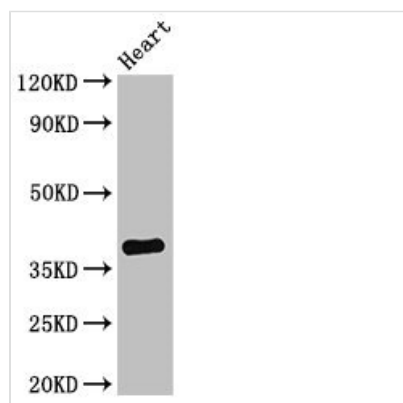




# TNMD Antibody

|                            |  |
|----------------------------|--|
| <b>Product Code</b>        | CSB-PA024007LA01HU   |
| <b>Storage</b>             | Upon receipt, store at -20°C or -80°C. Avoid repeated freeze.  |
| <b>Uniprot No.</b>         | Q9H2S6   |
| <b>Immunogen</b>           | Recombinant Human Tenomodulin protein (131-254AA)  |
| <b>Raised In</b>           | Rabbit   |
| <b>Species Reactivity</b>  | Human, Mouse   |
| <b>Tested Applications</b> | ELISA, WB, IF; Recommended dilution: WB:1:500-1:5000, IF:1:50-1:200  |
| <b>Form</b>                | Liquid   |
| <b>Conjugate</b>           | Non-conjugated   |
| <b>Storage Buffer</b>      | Preservative: 0.03% Proclin 300<br>Constituents: 50% Glycerol, 0.01M PBS, pH 7.4   |
| <b>Purification Method</b> | >95%, Protein G purified   |
| <b>Isotype</b>             | IgG  |
| <b>Clonality</b>           | Polyclonal   |
| <b>Alias</b>               | Tenomodulin (TeM) (hTeM) (Chondromodulin-1-like protein) (ChM1L) (hChM1L) (Chondromodulin-I-like protein) (Myodulin) (Tendin), TNMD, CHM1L |
| <b>Immunogen Species</b>   | Homo sapiens (Human)   |
| <b>Research Area</b>       | Cardiovascular   |
| <b>Target Names</b>        | TNMD   |

## Image



### Western Blot

Positive WB detected in: Mouse heart tissue

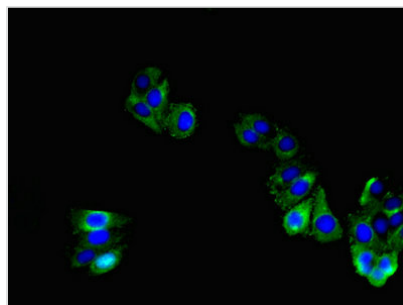
All lanes: TNMD antibody at 2.8µg/ml

Secondary

Goat polyclonal to rabbit IgG at 1/50000 dilution

Predicted band size: 38, 24, 31 kDa

Observed band size: 38 kDa



Immunofluorescent analysis of HepG2 cells using CSB-PA024007LA01HU at dilution of 1:100 and Alexa Fluor 488-conjugated AffiniPure Goat Anti-Rabbit IgG(H+L)

---

**Usage**

For Research Use Only. Not for use in diagnostic or therapeutic procedures.