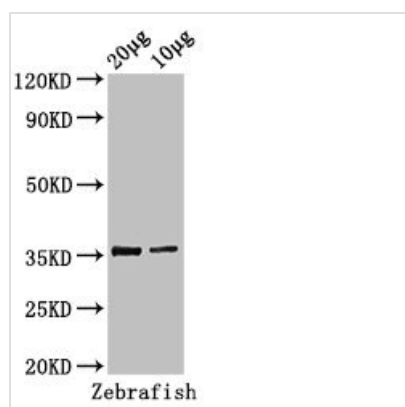




# tal1 Antibody

|                            |   |
|----------------------------|---|
| <b>Product Code</b>        | CSB-PA20969A0Rb   |
| <b>Storage</b>             | Upon receipt, store at -20°C or -80°C. Avoid repeated freeze.   |
| <b>Uniprot No.</b>         | O93507  |
| <b>Immunogen</b>           | Recombinant Zebrafish T-cell acute lymphocytic leukemia protein 1 homolog protein (1-324AA)             |
| <b>Raised In</b>           | Rabbit  |
| <b>Species Reactivity</b>  | Zebrafish   |
| <b>Tested Applications</b> | ELISA, WB; Recommended dilution: WB:1:500-1:5000  |
| <b>Form</b>                | Liquid  |
| <b>Conjugate</b>           | Non-conjugated  |
| <b>Storage Buffer</b>      | Preservative: 0.03% Proclin 300<br>Constituents: 50% Glycerol, 0.01M PBS, pH 7.4                        |
| <b>Purification Method</b> | >95%, Protein G purified  |
| <b>Isotype</b>             | IgG   |
| <b>Clonality</b>           | Polyclonal  |
| <b>Alias</b>               | T-cell acute lymphocytic leukemia protein 1 homolog (TAL-1) (Stem cell protein) (zSCL), tal1, scl tal-1 |
| <b>Immunogen Species</b>   | Zebrafish   |
| <b>Research Area</b>       | Others  |
| <b>Target Names</b>        | tal1  |

## Image



### Western Blot

Positive WB detected in: Zebrafish tissue 20µg, 10µg  
 All lanes: tal1 antibody at 3µg/ml  
 Secondary  
 Goat polyclonal to rabbit IgG at 1/50000 dilution  
 Predicted band size: 36, 23 kDa  
 Observed band size: 36 kDa

## Usage

For Research Use Only. Not for use in diagnostic or therapeutic procedures.