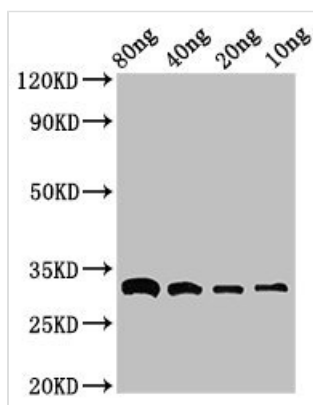




bla Antibody

Product Code	CSB-PA333368LA01ENL
Storage	Upon receipt, store at -20°C or -80°C. Avoid repeated freeze.
Uniprot No.	P28585
Immunogen	Recombinant Escherichia coli Beta-lactamase CTX-M-1 protein (29-291AA)
Raised In	Rabbit
Species Reactivity	Escherichia coli
Tested Applications	ELISA, WB; Recommended dilution: WB:1:500-1:5000
Form	Liquid
Conjugate	Non-conjugated
Storage Buffer	Preservative: 0.03% Proclin 300 Constituents: 50% Glycerol, 0.01M PBS, pH 7.4
Purification Method	>95%, Protein G purified
Isotype	IgG
Clonality	Polyclonal
Alias	Beta-lactamase CTX-M-1 (EC 3.5.2.6) (Beta-lactamase MEN-1) (Cefotaximase 1), bla, men1
Immunogen Species	Escherichia coli
Research Area	Others
Target Names	bla

Image



Western Blot

Positive WB detected in Recombinant protein

All lanes: bla antibody at 3μg/ml

Secondary

Goat polyclonal to rabbit IgG at 1/50000 dilution

Predicted band size: 33 kDa

Observed band size: 33 kDa

Usage

For Research Use Only. Not for use in diagnostic or therapeutic procedures.