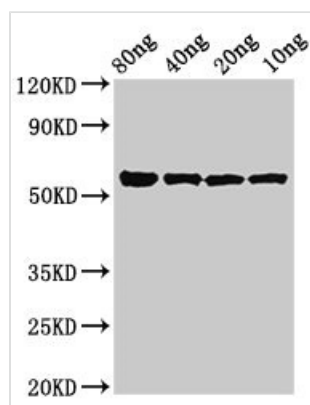




kgp Antibody

Product Code	CSB-PA464342LA01EXZ
Storage	Upon receipt, store at -20°C or -80°C. Avoid repeated freeze.
Uniprot No.	B2RLK2
Immunogen	Recombinant Porphyromonas gingivalis Lys-gingipain protein (229-594AA)
Raised In	Rabbit
Species Reactivity	Porphyromonas gingivalis
Tested Applications	ELISA, WB; Recommended dilution: WB:1:500-1:5000
Form	Liquid
Conjugate	Non-conjugated
Storage Buffer	Preservative: 0.03% Proclin 300 Constituents: 50% Glycerol, 0.01M PBS, pH 7.4
Purification Method	>95%, Protein G purified
Isotype	IgG
Clonality	Polyclonal
Alias	Lys-gingipain (EC 3.4.22.47) (Lysine-specific cysteine proteinase Kgp) [Cleaved into: Lys-gingipain catalytic subunit; 39 kDa adhesin; 15 kDa adhesin; 44 kDa adhesin], kgp
Immunogen Species	Porphyromonas gingivalis
Research Area	Others
Target Names	kgp

Image



Western Blot

Positive WB detected in Recombinant protein

All lanes: kgp antibody at 3µg/ml

Secondary

Goat polyclonal to rabbit IgG at 1/50000 dilution

Predicted band size: 56 kDa

Observed band size: 56 kDa

Usage

For Research Use Only. Not for use in diagnostic or therapeutic procedures.