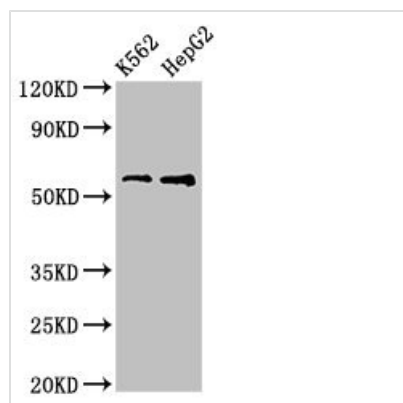




# FSCN1 Antibody

|                            |                                                                                          |
|----------------------------|------------------------------------------------------------------------------------------|
| <b>Product Code</b>        | CSB-PA619084LA01HU                                                                       |
| <b>Storage</b>             | Upon receipt, store at -20°C or -80°C. Avoid repeated freeze.                            |
| <b>Uniprot No.</b>         | Q16658                                                                                   |
| <b>Immunogen</b>           | Recombinant Human Fascin protein (2-187AA)                                               |
| <b>Raised In</b>           | Rabbit                                                                                   |
| <b>Species Reactivity</b>  | Human                                                                                    |
| <b>Tested Applications</b> | ELISA, WB, IHC, IF; Recommended dilution: WB:1:500-1:5000, IHC:1:20-1:200, IF:1:50-1:200 |
| <b>Form</b>                | Liquid                                                                                   |
| <b>Conjugate</b>           | Non-conjugated                                                                           |
| <b>Storage Buffer</b>      | Preservative: 0.03% Proclin 300<br>Constituents: 50% Glycerol, 0.01M PBS, pH 7.4         |
| <b>Purification Method</b> | >95%, Protein G purified                                                                 |
| <b>Isotype</b>             | IgG                                                                                      |
| <b>Clonality</b>           | Polyclonal                                                                               |
| <b>Alias</b>               | Fascin (55 kDa actin-bundling protein) (Singed-like protein) (p55), FSCN1, FAN1 HSN SNL  |
| <b>Immunogen Species</b>   | Homo sapiens (Human)                                                                     |
| <b>Research Area</b>       | Signal Transduction                                                                      |
| <b>Target Names</b>        | FSCN1                                                                                    |

## Image



### Western Blot

Positive WB detected in: K562 whole cell lysate, HepG2 whole cell lysate

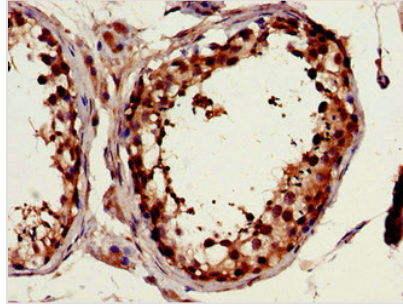
All lanes: FSCN1 antibody at 3.2µg/ml

Secondary

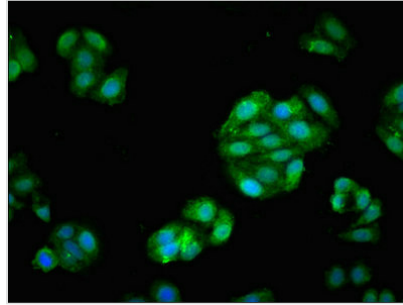
Goat polyclonal to rabbit IgG at 1/50000 dilution

Predicted band size: 55 kDa

Observed band size: 55 kDa



Immunohistochemistry of paraffin-embedded human testis tissue using CSB-PA619084LA01HU at dilution of 1:100



Immunofluorescent analysis of HepG2 cells using CSB-PA619084LA01HU at dilution of 1:100 and Alexa Fluor 488-conjugated AffiniPure Goat Anti-Rabbit IgG(H+L)

## Usage

For Research Use Only. Not for use in diagnostic or therapeutic procedures.