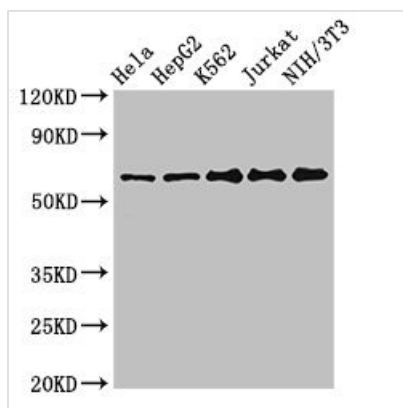




CPSF6 Antibody

Product Code	CSB-PA621966LA01HU
Storage	Upon receipt, store at -20°C or -80°C. Avoid repeated freeze.
Uniprot No.	Q16630
Immunogen	Recombinant Human Cleavage and polyadenylation specificity factor subunit 6 protein (186-226AA)
Raised In	Rabbit
Species Reactivity	Human, Mouse
Tested Applications	ELISA, WB, IHC, IF; Recommended dilution: WB:1:500-1:5000, IHC:1:20-1:200, IF:1:50-1:200
Form	Liquid
Conjugate	Non-conjugated
Storage Buffer	Preservative: 0.03% Proclin 300 Constituents: 50% Glycerol, 0.01M PBS, pH 7.4
Purification Method	>95%, Protein G purified
Isotype	IgG
Clonality	Polyclonal
Alias	Cleavage and polyadenylation specificity factor subunit 6 (Cleavage and polyadenylation specificity factor 68 kDa subunit) (CFIm68) (CPSF 68 kDa subunit) (Pre-mRNA cleavage factor Im 68 kDa subunit) (Protein HPBR11-4/7), CPSF6, CFIM68
Immunogen Species	Homo sapiens (Human)
Research Area	Others
Target Names	CPSF6

Image



Western Blot

Positive WB detected in: HeLa whole cell lysate, HepG2 whole cell lysate, K562 whole cell lysate, Jurkat whole cell lysate, NIH/3T3 whole cell lysate

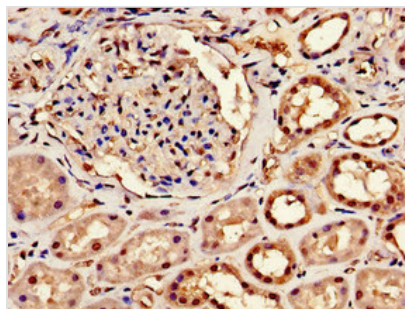
All lanes: CPSF6 antibody at 3µg/ml

Secondary

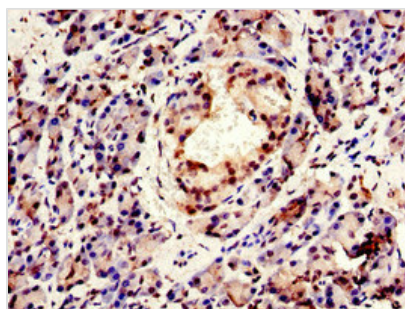
Goat polyclonal to rabbit IgG at 1/50000 dilution

Predicted band size: 60, 64, 53 kDa

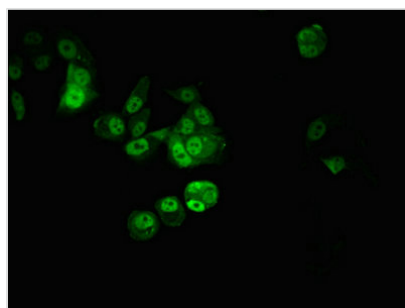
Observed band size: 60 kDa



Immunohistochemistry of paraffin-embedded human kidney tissue using CSB-PA621966LA01HU at dilution of 1:100



Immunohistochemistry of paraffin-embedded human pancreatic tissue using CSB-PA621966LA01HU at dilution of 1:100



Immunofluorescent analysis of MCF-7 cells using CSB-PA621966LA01HU at dilution of 1:100 and Alexa Fluor 488-conjugated AffiniPure Goat Anti-Rabbit IgG(H+L)

Usage

For Research Use Only. Not for use in diagnostic or therapeutic procedures.