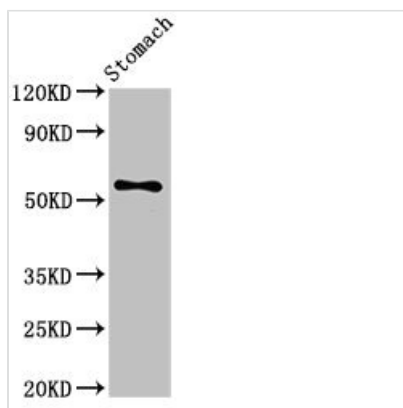




# SMARCD3 Antibody

<b>Product Code</b>	CSB-PA754358LA01HU
<b>Storage</b>	Upon receipt, store at -20°C or -80°C. Avoid repeated freeze.
<b>Uniprot No.</b>	Q6STE5
<b>Immunogen</b>	Recombinant Human SWI/SNF-related matrix-associated actin-dependent regulator of chromatin subfamily D member 3 protein (2-101AA)
<b>Raised In</b>	Rabbit
<b>Species Reactivity</b>	Human, Mouse
<b>Tested Applications</b>	ELISA, WB; Recommended dilution: WB:1:500-1:5000
<b>Form</b>	Liquid
<b>Conjugate</b>	Non-conjugated
<b>Storage Buffer</b>	Preservative: 0.03% Proclin 300 Constituents: 50% Glycerol, 0.01M PBS, pH 7.4
<b>Purification Method</b>	>95%, Protein G purified
<b>Isotype</b>	IgG
<b>Clonality</b>	Polyclonal
<b>Alias</b>	SWI/SNF-related matrix-associated actin-dependent regulator of chromatin subfamily D member 3 (60 kDa BRG-1/Brm-associated factor subunit C) (BRG1-associated factor 60C) (BAF60C), SMARCD3, BAF60C
<b>Immunogen Species</b>	Homo sapiens (Human)
<b>Research Area</b>	Signal Transduction
<b>Target Names</b>	SMARCD3

## Image



### Western Blot

Positive WB detected in: Mouse stomach tissue

All lanes: SMARCD3 antibody at 3.4µg/ml

Secondary

Goat polyclonal to rabbit IgG at 1/50000 dilution

Predicted band size: 56, 54 kDa

Observed band size: 56 kDa

## Usage

For Research Use Only. Not for use in diagnostic or therapeutic procedures.