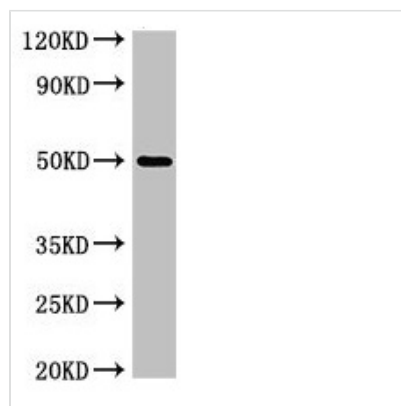




SGMS1 Antibody

Product Code	CSB-PA801243LA01HU
Storage	Upon receipt, store at -20°C or -80°C. Avoid repeated freeze.
Uniprot No.	Q86VZ5
Immunogen	Recombinant Human Phosphatidylcholine:ceramide cholinephosphotransferase 1 protein (48-137AA)
Raised In	Rabbit
Species Reactivity	Human
Tested Applications	ELISA, WB, IHC; Recommended dilution: WB:1:500-1:5000, IHC:1:200-1:500
Form	Liquid
Conjugate	Non-conjugated
Storage Buffer	Preservative: 0.03% Proclin 300 Constituents: 50% Glycerol, 0.01M PBS, pH 7.4
Purification Method	>95%, Protein G purified
Isotype	IgG
Clonality	Polyclonal
Alias	Phosphatidylcholine:ceramide cholinephosphotransferase 1 (EC 2.7.8.27) (Medulla oblongata-derived protein) (Protein Mob) (Sphingomyelin synthase 1) (Transmembrane protein 23), SGMS1, MOB SMS1 TMEM23
Immunogen Species	Homo sapiens (Human)
Research Area	Signal Transduction
Target Names	SGMS1

Image



Western Blot

Positive WB detected in: K562 whole cell lysate

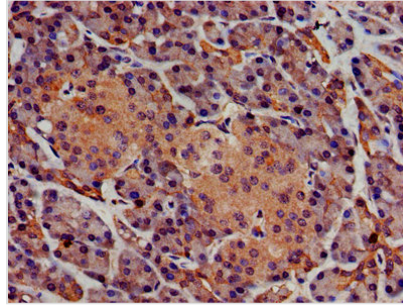
All lanes: SGMS1 antibody at 4µg/ml

Secondary

Goat polyclonal to rabbit IgG at 1/50000 dilution

Predicted band size: 49, 26 kDa

Observed band size: 49 kDa



IHC image of CSB-PA801243LA01HU diluted at 1:400 and staining in paraffin-embedded human pancreatic tissue performed on a Leica Bond™ system. After dewaxing and hydration, antigen retrieval was mediated by high pressure in a citrate buffer (pH 6.0). Section was blocked with 10% normal goat serum 30min at RT. Then primary antibody (1% BSA) was incubated at 4°C overnight. The primary is detected by a biotinylated secondary antibody and visualized using an HRP conjugated SP system.

Usage

For Research Use Only. Not for use in diagnostic or therapeutic procedures.