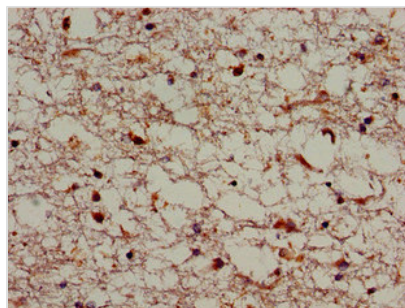




SORL1 Antibody

Product Code	CSB-PA821688LA01HU
Storage	Upon receipt, store at -20°C or -80°C. Avoid repeated freeze.
Uniprot No.	Q92673
Immunogen	Recombinant Human Sortilin-related receptor protein (525-744AA)
Raised In	Rabbit
Species Reactivity	Human
Tested Applications	ELISA, IHC; Recommended dilution: IHC:1:20-1:200
Form	Liquid
Conjugate	Non-conjugated
Storage Buffer	Preservative: 0.03% Proclin 300 Constituents: 50% Glycerol, 0.01M PBS, pH 7.4
Purification Method	>95%, Protein G purified
Isotype	IgG
Clonality	Polyclonal
Alias	Sortilin-related receptor (Low-density lipoprotein receptor relative with 11 ligand-binding repeats) (LDLR relative with 11 ligand-binding repeats) (LR11) (SorLA-1) (Sorting protein-related receptor containing LDLR class A repeats) (SorLA), SORL1, C11orf32
Immunogen Species	Homo sapiens (Human)
Research Area	Neuroscience
Target Names	SORL1

Image



Immunohistochemistry of paraffin-embedded human brain tissue using CSB-PA821688LA01HU at dilution of 1:100

Usage

For Research Use Only. Not for use in diagnostic or therapeutic procedures.