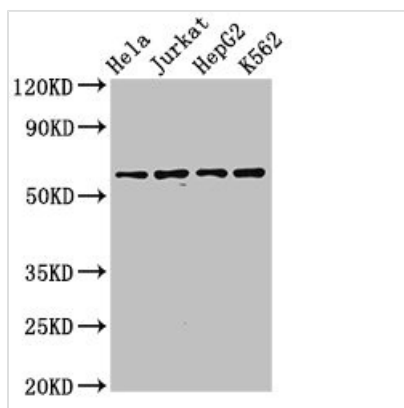




SMARCD1 Antibody

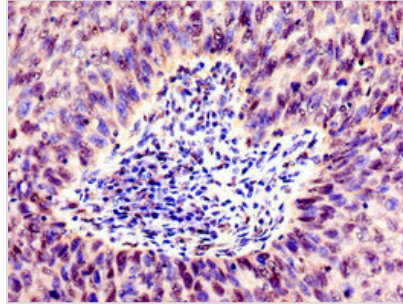
Product Code	CSB-PA846627LA01HU
Storage	Upon receipt, store at -20°C or -80°C. Avoid repeated freeze.
Uniprot No.	Q96GM5
Immunogen	Recombinant Human SWI/SNF-related matrix-associated actin-dependent regulator of chromatin subfamily D member 1 protein (7-124AA)
Raised In	Rabbit
Species Reactivity	Human
Tested Applications	ELISA, WB, IHC, IF; Recommended dilution: WB:1:500-1:5000, IHC:1:20-1:200, IF:1:50-1:200
Form	Liquid
Conjugate	Non-conjugated
Storage Buffer	Preservative: 0.03% Proclin 300 Constituents: 50% Glycerol, 0.01M PBS, pH 7.4
Purification Method	>95%, Protein G purified
Isotype	IgG
Clonality	Polyclonal
Alias	SWI/SNF-related matrix-associated actin-dependent regulator of chromatin subfamily D member 1 (60 kDa BRG-1/Brm-associated factor subunit A) (BRG1-associated factor 60A) (BAF60A) (SWI/SNF complex 60 kDa subunit), SMARCD1, BAF60A
Immunogen Species	Homo sapiens (Human)
Research Area	Epigenetics and Nuclear Signaling
Target Names	SMARCD1

Image

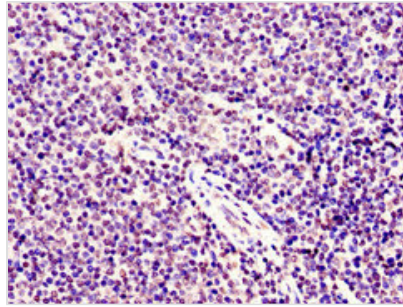


Western Blot

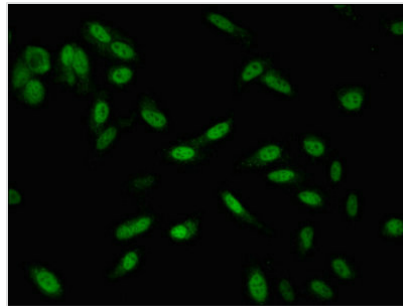
Positive WB detected in: HeLa whole cell lysate, Jurkat whole cell lysate, HepG2 whole cell lysate, K562 whole cell lysate
 All lanes: SMARCD1 antibody at 3.2µg/ml
 Secondary
 Goat polyclonal to rabbit IgG at 1/50000 dilution
 Predicted band size: 59, 54 kDa
 Observed band size: 59 kDa



Immunohistochemistry of paraffin-embedded human cervical cancer using CSB-PA846627LA01HU at dilution of 1:100



Immunohistochemistry of paraffin-embedded human lymph node tissue using CSB-PA846627LA01HU at dilution of 1:100



Immunofluorescent analysis of HeLa cells using CSB-PA846627LA01HU at dilution of 1:100 and Alexa Fluor 488-conjugated AffiniPure Goat Anti-Rabbit IgG(H+L)

Usage

For Research Use Only. Not for use in diagnostic or therapeutic procedures.