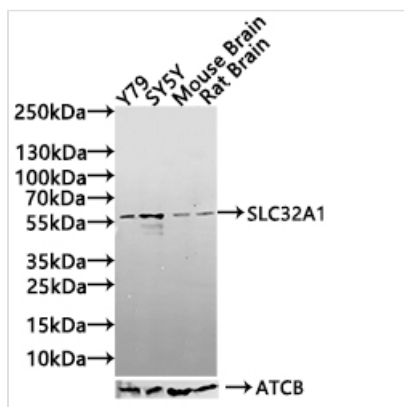




SLC32A1 Antibody

Product Code	CSB-PA863984LA01HU
Storage	Upon receipt, store at -20°C or -80°C. Avoid repeated freeze.
Uniprot No.	Q9H598
Immunogen	Synthesized peptide derived from SLC32A1
Raised In	Rabbit
Species Reactivity	Human, Mouse, Rat
Tested Applications	ELISA, WB; Recommended dilution: WB:1:500-1:2000
Form	Liquid
Storage Buffer	Liquid in PBS containing 50% glycerol, 0.5% BSA and 0.02% sodium azide
Purification Method	Antigen affinity purification
Isotype	IgG
Clonality	Polyclonal
Product Type	Polyclonal Antibody
Immunogen Species	Homo sapiens (Human)
Research Area	Neuroscience
Target Names	SLC32A1

Image



Western Blot

Positive WB detected in: Y79 whole cell lysate(30µg), SY5Y whole cell lysate(30µg), Mouse Brain tissue lysate(30µg), Rat Brain tissue lysate(30µg)

All lanes: SLC32A1 antibody at 1:1000

Secondary

Goat polyclonal to rabbit IgG at 1/40000 dilution

Predicted band size: 58 kDa

Observed band size: 58 kDa

Exposure time: 120s

Usage

For Research Use Only. Not for use in diagnostic or therapeutic procedures.