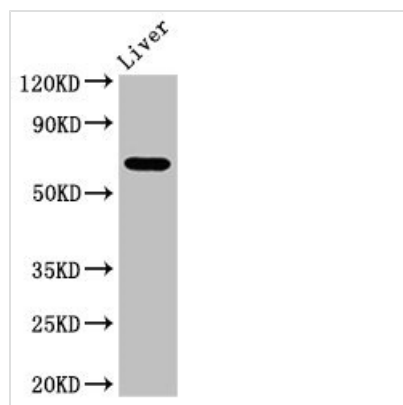




SENP2 Antibody

Product Code	CSB-PA888026LA01HU
Storage	Upon receipt, store at -20°C or -80°C. Avoid repeated freeze.
Uniprot No.	Q9HC62
Immunogen	Recombinant Human Sentrin-specific protease 2 protein (138-324AA)
Raised In	Rabbit
Species Reactivity	Human, Mouse
Tested Applications	ELISA, WB, IHC, IF; Recommended dilution: WB:1:500-1:5000, IHC:1:20-1:200, IF:1:50-1:200
Form	Liquid
Conjugate	Non-conjugated
Storage Buffer	Preservative: 0.03% Proclin 300 Constituents: 50% Glycerol, 0.01M PBS, pH 7.4
Purification Method	>95%, Protein G purified
Isotype	IgG
Clonality	Polyclonal
Alias	Sentrin-specific protease 2 (EC 3.4.22.-) (Axam2) (SMT3-specific isopeptidase 2) (Smt3ip2) (Sentrin/SUMO-specific protease SENP2), SENP2, KIAA1331
Immunogen Species	Homo sapiens (Human)
Research Area	Cell Biology
Target Names	SENP2

Image



Western Blot

Positive WB detected in: Mouse liver tissue

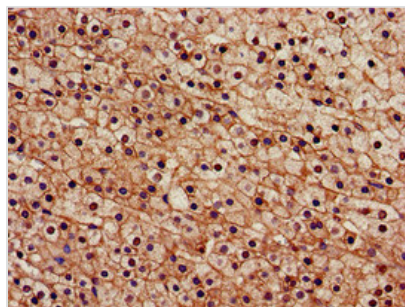
All lanes: SENP2 antibody at 3.4µg/ml

Secondary

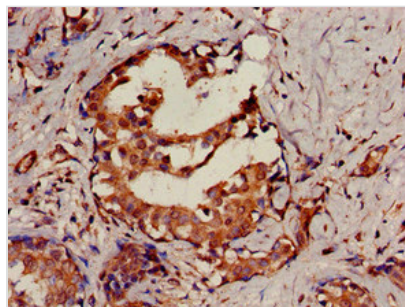
Goat polyclonal to rabbit IgG at 1/50000 dilution

Predicted band size: 68, 67 kDa

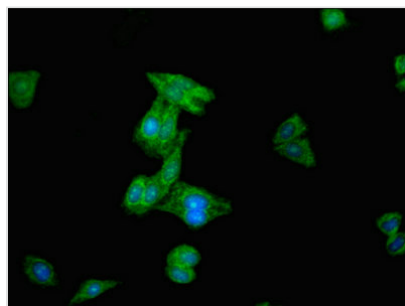
Observed band size: 68 kDa



Immunohistochemistry of paraffin-embedded human adrenal gland tissue using CSB-PA888026LA01HU at dilution of 1:100



Immunohistochemistry of paraffin-embedded human breast cancer using CSB-PA888026LA01HU at dilution of 1:100



Immunofluorescent analysis of HepG2 cells using CSB-PA888026LA01HU at dilution of 1:100 and Alexa Fluor 488-conjugated AffiniPure Goat Anti-Rabbit IgG(H+L)

Usage

For Research Use Only. Not for use in diagnostic or therapeutic procedures.