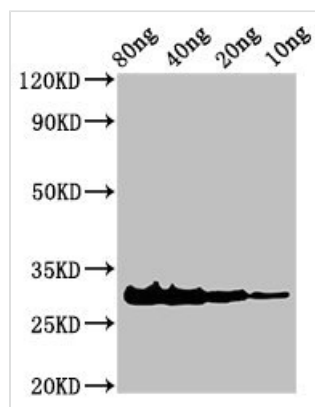




Snaclec rhodocytin subunit alpha Antibody

Product Code	CSB-PA888242LA01CBG
Storage	Upon receipt, store at -20°C or -80°C. Avoid repeated freeze.
Uniprot No.	Q9I841
Immunogen	Recombinant Calloselasma rhodostoma Snaclec rhodocytin subunit alpha protein (1-136AA)
Raised In	Rabbit
Species Reactivity	Calloselasma rhodostoma
Tested Applications	ELISA, WB; Recommended dilution: WB:1:500-1:5000
Form	Liquid
Conjugate	Non-conjugated
Storage Buffer	Preservative: 0.03% Proclin 300 Constituents: 50% Glycerol, 0.01M PBS, pH 7.4
Purification Method	>95%, Protein G purified
Isotype	IgG
Clonality	Polyclonal
Alias	Snaclec rhodocytin subunit alpha (Aggretin alpha chain) (Rhodoaggretin subunit alpha)
Immunogen Species	Calloselasma rhodostoma
Research Area	Others

Image



Western Blot

Positive WB detected in Recombinant protein
 All lanes: Rhodocytin subunit alpha antibody at 3µg/ml
 Secondary
 Goat polyclonal to rabbit IgG at 1/50000 dilution
 Predicted band size: 31 kDa
 Observed band size: 31 kDa

Usage

For Research Use Only. Not for use in diagnostic or therapeutic procedures.