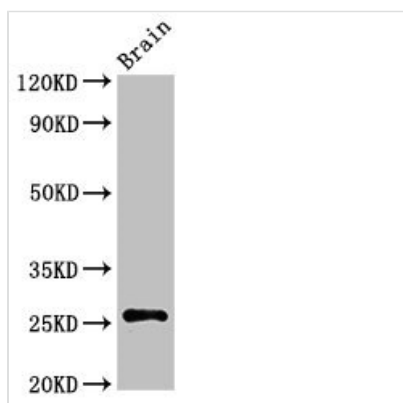




ASCL1 Antibody

Product Code	CSB-PA002199LA01HU
Storage	Upon receipt, store at -20°C or -80°C. Avoid repeated freeze.
Uniprot No.	P50553
Immunogen	Recombinant Human Achaete-scute homolog 1 protein (1-236AA)
Raised In	Rabbit
Species Reactivity	Human, Rat
Tested Applications	ELISA, WB, IHC; Recommended dilution: WB:1:500-1:5000, IHC:1:20-1:200
Form	Liquid
Conjugate	Non-conjugated
Storage Buffer	Preservative: 0.03% Proclin 300 Constituents: 50% Glycerol, 0.01M PBS, pH 7.4
Purification Method	>95%, Protein G purified
Isotype	IgG
Clonality	Polyclonal
Alias	Achaete-scute homolog 1 (ASH-1) (hASH1) (Class A basic helix-loop-helix protein 46) (bHLHa46), ASCL1, ASH1 BHLHA46 HASH1
Immunogen Species	Homo sapiens (Human)
Research Area	Epigenetics and Nuclear Signaling
Target Names	ASCL1

Image



Western Blot

Positive WB detected in: Rat brain tissue

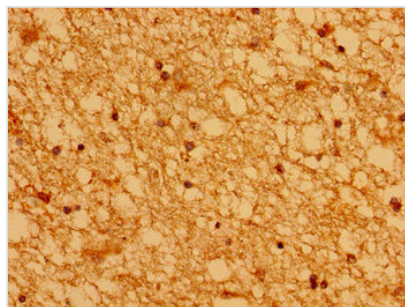
All lanes: ASCL1 antibody at 3µg/ml

Secondary

Goat polyclonal to rabbit IgG at 1/50000 dilution

Predicted band size: 26 kDa

Observed band size: 26 kDa



Immunohistochemistry of paraffin-embedded human brain tissue using CSB-PA002199LA01HU at dilution of 1:100

Usage

For Research Use Only. Not for use in diagnostic or therapeutic procedures.