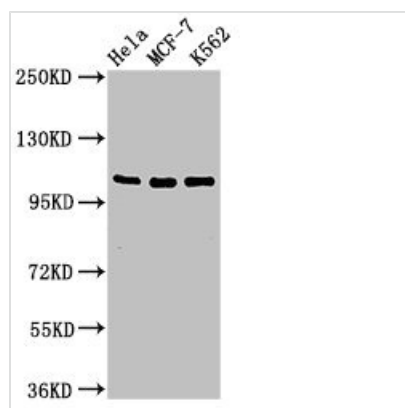




# EVC Antibody

|                            |  |
|----------------------------|--|
| <b>Product Code</b>        | CSB-PA007862LA01HU   |
| <b>Storage</b>             | Upon receipt, store at -20°C or -80°C. Avoid repeated freeze.                    |
| <b>Uniprot No.</b>         | P57679   |
| <b>Immunogen</b>           | Recombinant Human Ellis-van Creveld syndrome protein (493-602AA)                 |
| <b>Raised In</b>           | Rabbit   |
| <b>Species Reactivity</b>  | Human  |
| <b>Tested Applications</b> | ELISA, WB, IHC; Recommended dilution: WB:1:500-1:5000, IHC:1:20-1:200            |
| <b>Form</b>                | Liquid   |
| <b>Conjugate</b>           | Non-conjugated   |
| <b>Storage Buffer</b>      | Preservative: 0.03% Proclin 300<br>Constituents: 50% Glycerol, 0.01M PBS, pH 7.4 |
| <b>Purification Method</b> | >95%, Protein G purified   |
| <b>Isotype</b>             | IgG  |
| <b>Clonality</b>           | Polyclonal   |
| <b>Alias</b>               | Ellis-van Creveld syndrome protein (DWF-1), EVC                                  |
| <b>Immunogen Species</b>   | Homo sapiens (Human)   |
| <b>Research Area</b>       | Developmental Biology  |
| <b>Target Names</b>        | EVC  |

## Image



### Western Blot

Positive WB detected in: HeLa whole cell lysate, MCF-7 whole cell lysate, K562 whole cell lysate

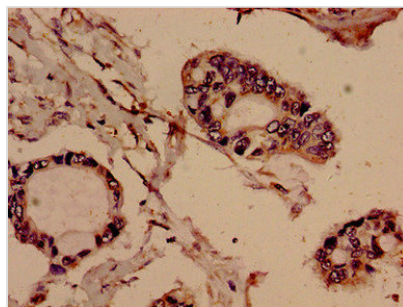
All lanes: EVC antibody at 2µg/ml

### Secondary

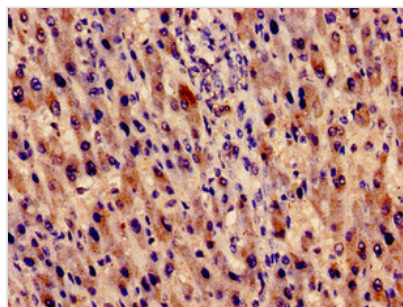
Goat polyclonal to rabbit IgG at 1/50000 dilution

Predicted band size: 112 kDa

Observed band size: 112 kDa



Immunohistochemistry analysis of human pancreatic cancer using CSB-PA007862LA01HU at dilution of 1:100



Immunocytochemistry analysis of human liver cancer using CSB-PA007862LA01HU at dilution of 1:100

## Usage

For Research Use Only. Not for use in diagnostic or therapeutic procedures.