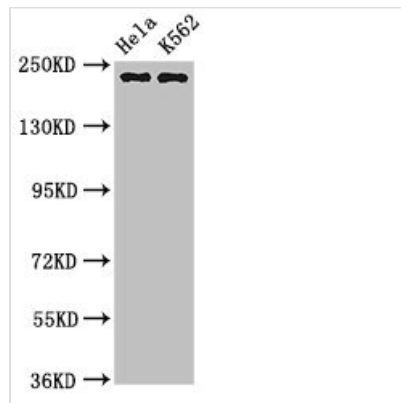




NUMA1 Antibody

Product Code	CSB-PA016185YA01HU
Storage	Upon receipt, store at -20°C or -80°C. Avoid repeated freeze.
Uniprot No.	Q14980
Immunogen	Recombinant Human Nuclear mitotic apparatus protein 1 protein (627-870AA)
Raised In	Rabbit
Species Reactivity	Human
Tested Applications	ELISA, WB, IHC, IF; Recommended dilution: WB:1:500-1:5000, IHC:1:20-1:200, IF:1:50-1:200
Form	Liquid
Conjugate	Non-conjugated
Storage Buffer	Preservative: 0.03% Proclin 300 Constituents: 50% Glycerol, 0.01M PBS, pH 7.4
Purification Method	>95%, Protein G purified
Isotype	IgG
Clonality	Polyclonal
Alias	Nuclear mitotic apparatus protein 1 (Nuclear matrix protein-22) (NMP-22) (Nuclear mitotic apparatus protein) (NuMA protein) (SP-H antigen), NUMA1, NMP22 NUMA
Immunogen Species	Homo sapiens (Human)
Research Area	Cell Biology
Target Names	NUMA1

Image



Western Blot

Positive WB detected in: HeLa whole cell lysate, K562 whole cell lysate

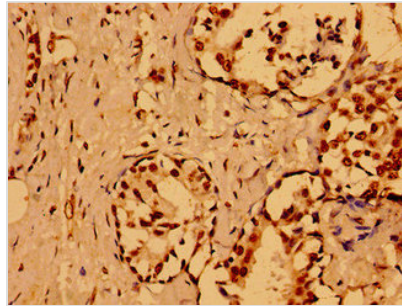
All lanes: NUMA1 antibody at 3.2µg/ml

Secondary

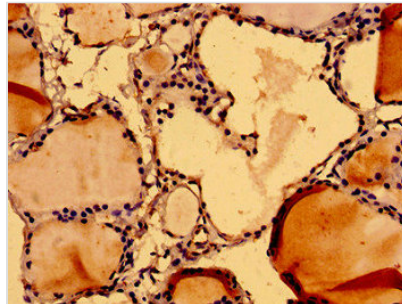
Goat polyclonal to rabbit IgG at 1/50000 dilution

Predicted band size: 239, 237, 202, 201, 110 kDa

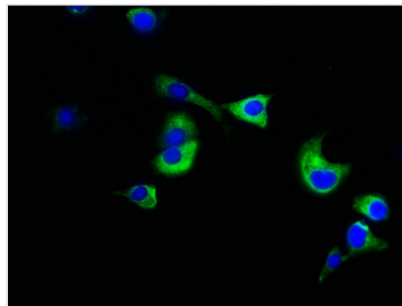
Observed band size: 239 kDa



Immunohistochemistry of paraffin-embedded human breast cancer using CSB-PA016185YA01HU at dilution of 1:100



Immunohistochemistry of paraffin-embedded human thyroid tissue using CSB-PA016185YA01HU at dilution of 1:100



Immunofluorescence staining of MCF-7 cells with CSB-PA016185YA01HU at 1:133, counter-stained with DAPI. The cells were fixed in 4% formaldehyde, permeabilized using 0.2% Triton X-100 and blocked in 10% normal Goat Serum. The cells were then incubated with the antibody overnight at 4°C. The secondary antibody was Alexa Fluor 488-conjugated AffiniPure Goat Anti-Rabbit IgG(H+L).