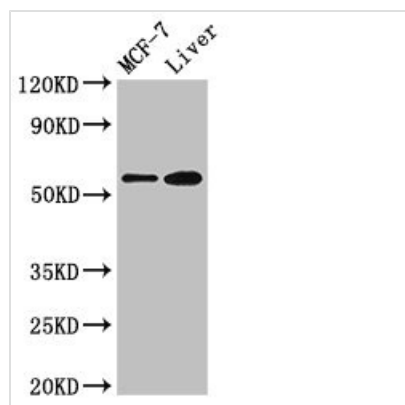




CBS Antibody

Product Code	CSB-PA12719A0Rb
Storage	Upon receipt, store at -20°C or -80°C. Avoid repeated freeze.
Uniprot No.	P35520
Immunogen	Recombinant Human Cystathionine beta-synthase protein (1-413AA)
Raised In	Rabbit
Species Reactivity	Human, Mouse
Tested Applications	ELISA, WB, IHC, IF, IP; Recommended dilution: WB:1:500-1:5000, IHC:1:20-1:200, IF:1:50-1:200, IP:1:200-1:2000
Form	Liquid
Conjugate	Non-conjugated
Storage Buffer	Preservative: 0.03% Proclin 300 Constituents: 50% Glycerol, 0.01M PBS, pH 7.4
Purification Method	>95%, Protein G purified
Isotype	IgG
Clonality	Polyclonal
Alias	Cystathionine beta-synthase (EC 4.2.1.22) (Beta-thionase) (Serine sulfhydrase), CBS
Immunogen Species	Homo sapiens (Human)
Research Area	Signal Transduction
Target Names	CBS

Image



Western Blot

Positive WB detected in: MCF-7 whole cell lysate, Mouse liver tissue

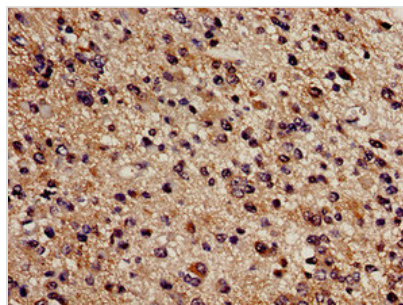
All lanes: CBS antibody at 2.7µg/ml

Secondary

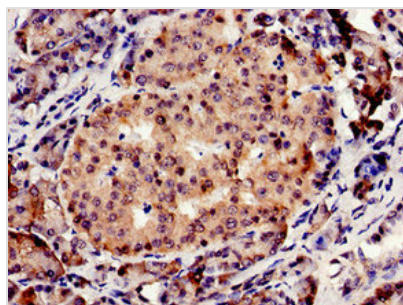
Goat polyclonal to rabbit IgG at 1/50000 dilution

Predicted band size: 61, 62 kDa

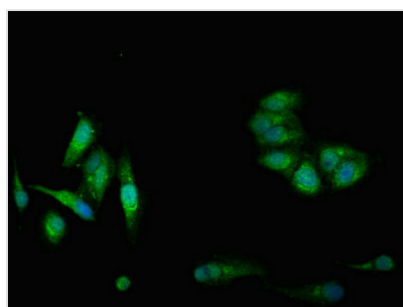
Observed band size: 61 kDa



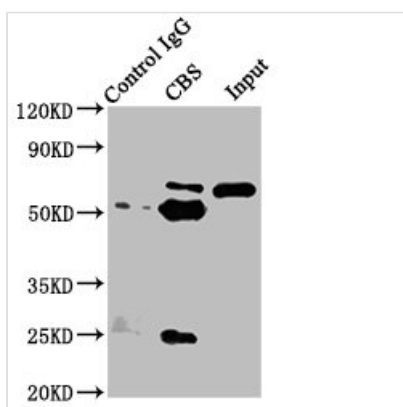
Immunohistochemistry analysis of human glioma using CSB-PA12719A0Rb at dilution of 1:100



Immunocytochemistry analysis of human pancreatic tissue using CSB-PA12719A0Rb at dilution of 1:100



Immunofluorescent analysis of HeLa cells using CSB-PA12719A0Rb at dilution of 1:100 and Alexa Fluor 488-conjugated AffiniPure Goat Anti-Rabbit IgG(H+L)



Immunoprecipitating CBS in HeLa whole cell lysate

Lane 1: Rabbit control IgG instead of CSB-PA12719A0Rb in HeLa whole cell lysate. For western blotting, a HRP-conjugated Protein G antibody was used as the secondary antibody (1/5000)

Lane 2: CSB-PA12719A0Rb (8μg) + HeLa whole cell lysate (500μg)

Lane 3: HeLa whole cell lysate (20μg)