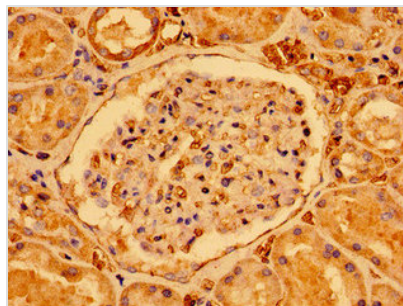




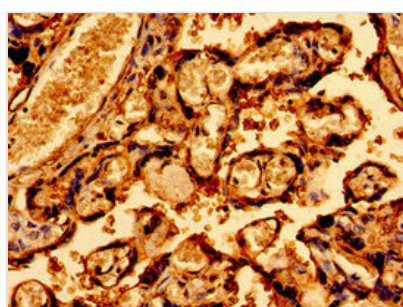
SDHAF1 Antibody

Product Code	CSB-PA406800LA01HU
Storage	Upon receipt, store at -20°C or -80°C. Avoid repeated freeze.
Uniprot No.	A6NFY7
Immunogen	Recombinant Human Succinate dehydrogenase assembly factor 1, mitochondrial protein (78-115AA)
Raised In	Rabbit
Species Reactivity	Human
Tested Applications	ELISA, IHC; Recommended dilution: IHC:1:20-1:200
Form	Liquid
Conjugate	Non-conjugated
Storage Buffer	Preservative: 0.03% Proclin 300 Constituents: 50% Glycerol, 0.01M PBS, pH 7.4
Purification Method	>95%, Protein G purified
Isotype	IgG
Clonality	Polyclonal
Alias	Succinate dehydrogenase assembly factor 1, mitochondrial (SDH assembly factor 1) (SDHAF1) (LYR motif-containing protein 8), SDHAF1, LYRM8
Immunogen Species	Homo sapiens (Human)
Research Area	Others
Target Names	SDHAF1

Image



Immunohistochemistry of paraffin-embedded human kidney tissue using CSB-PA406800LA01HU at dilution of 1:100



Immunohistochemistry of paraffin-embedded human placenta tissue using CSB-PA406800LA01HU at dilution of 1:100



Usage

For Research Use Only. Not for use in diagnostic or therapeutic procedures.