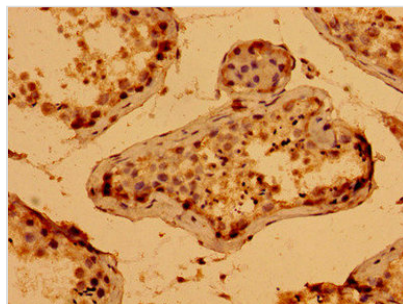




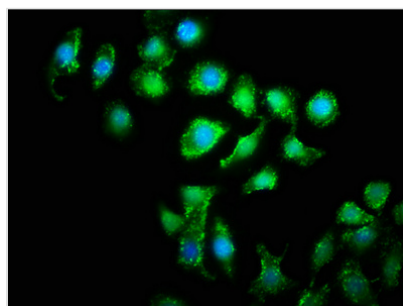
WWC2 Antibody

| | |
|----------------------------|--|
| Product Code | CSB-PA734879LA01HU |
| Storage | Upon receipt, store at -20°C or -80°C. Avoid repeated freeze. |
| Uniprot No. | Q6AWC2 |
| Immunogen | Recombinant Human Protein WWC2 protein (828-1127AA) |
| Raised In | Rabbit |
| Species Reactivity | Human |
| Tested Applications | ELISA, IHC, IF; Recommended dilution: IHC:1:20-1:200, IF:1:50-1:200 |
| Form | Liquid |
| Conjugate | Non-conjugated |
| Storage Buffer | Preservative: 0.03% Proclin 300 Constituents: 50% Glycerol, 0.01M PBS, pH 7.4 |
| Purification Method | >95%, Protein G purified |
| Isotype | IgG |
| Clonality | Polyclonal |
| Alias | Protein WWC2 (BH-3-only member B) (WW domain-containing protein 2), WWC2, BOMB |
| Immunogen Species | Homo sapiens (Human) |
| Research Area | Cell Biology |
| Target Names | WWC2 |

Image



Immunohistochemistry of paraffin-embedded human testis tissue using CSB-PA734879LA01HU at dilution of 1:100



Immunofluorescence staining of A549 cells with CSB-PA734879LA01HU at 1:133, counter-stained with DAPI. The cells were fixed in 4% formaldehyde, permeabilized using 0.2% Triton X-100 and blocked in 10% normal Goat Serum. The cells were then incubated with the antibody overnight at 4°C. The secondary antibody was Alexa Fluor 488-conjugated AffiniPure Goat Anti-Rabbit IgG(H+L).