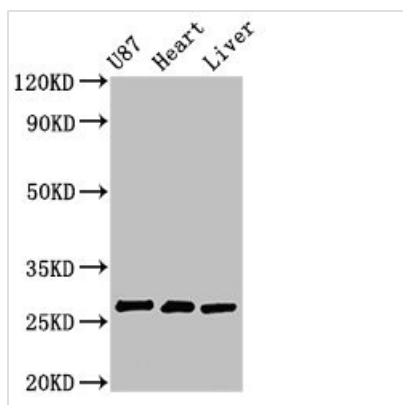




HSCB Antibody

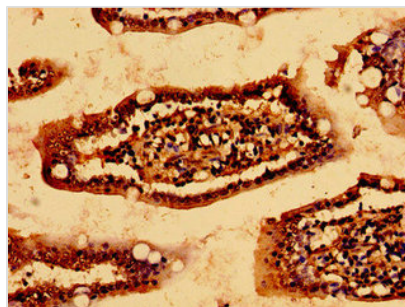
Product Code	CSB-PA816893LA01HU
Storage	Upon receipt, store at -20°C or -80°C. Avoid repeated freeze.
Uniprot No.	Q8IWL3
Immunogen	Recombinant Human Iron-sulfur cluster co-chaperone protein HscB, mitochondrial protein (30-235AA)
Raised In	Rabbit
Species Reactivity	Human, Rat
Tested Applications	ELISA, WB, IHC; Recommended dilution: WB:1:500-1:5000, IHC:1:20-1:200
Form	Liquid
Conjugate	Non-conjugated
Storage Buffer	Preservative: 0.03% Proclin 300 Constituents: 50% Glycerol, 0.01M PBS, pH 7.4
Purification Method	>95%, Protein G purified
Isotype	IgG
Clonality	Polyclonal
Alias	Iron-sulfur cluster co-chaperone protein HscB, mitochondrial (DnaJ homolog subfamily C member 20) (Hsc20), HSCB, DNAJC20 HSC20
Immunogen Species	Homo sapiens (Human)
Research Area	Signal Transduction
Target Names	HSCB

Image



Western Blot

Positive WB detected in: U87 whole cell lysate, Rat heart tissue, Rat liver tissue
 All lanes: HSCB antibody at 2.7µg/ml
 Secondary
 Goat polyclonal to rabbit IgG at 1/50000 dilution
 Predicted band size: 28 kDa
 Observed band size: 28 kDa



Immunohistochemistry of paraffin-embedded human small intestine tissue using CSB-PA816893LA01HU at dilution of 1:100

Usage

For Research Use Only. Not for use in diagnostic or therapeutic procedures.