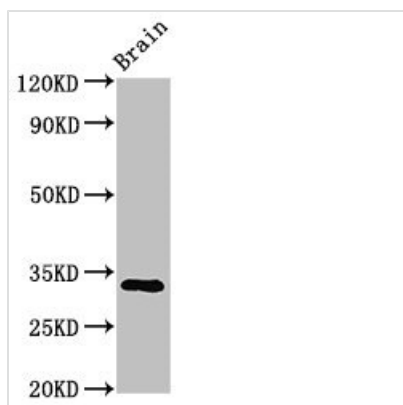




ORAI1 Antibody

Product Code	CSB-PA846601LA01HU
Storage	Upon receipt, store at -20°C or -80°C. Avoid repeated freeze.
Uniprot No.	Q96D31
Immunogen	Recombinant Human Calcium release-activated calcium channel protein 1 protein (1-87AA)
Raised In	Rabbit
Species Reactivity	Human, Mouse
Tested Applications	ELISA, WB, IHC; Recommended dilution: WB:1:500-1:5000, IHC:1:20-1:200
Form	Liquid
Conjugate	Non-conjugated
Storage Buffer	Preservative: 0.03% Proclin 300 Constituents: 50% Glycerol, 0.01M PBS, pH 7.4
Purification Method	>95%, Protein G purified
Isotype	IgG
Clonality	Polyclonal
Alias	Calcium release-activated calcium channel protein 1 (Protein orai-1) (Transmembrane protein 142A), ORAI1, CRACM1 TMEM142A
Immunogen Species	Homo sapiens (Human)
Research Area	Immunology
Target Names	ORAI1

Image



Western Blot

Positive WB detected in: Mouse brain tissue

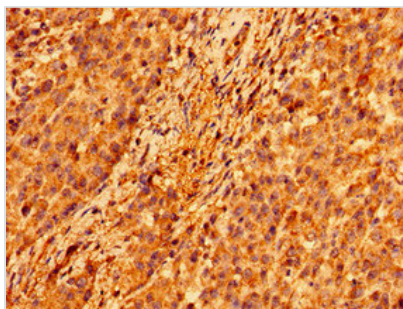
All lanes: ORAI1 antibody at 3.2µg/ml

Secondary

Goat polyclonal to rabbit IgG at 1/50000 dilution

Predicted band size: 33, 26 kDa

Observed band size: 33 kDa



Immunohistochemistry of paraffin-embedded human colon cancer using CSB-PA846601LA01HU at dilution of 1:100

Usage

For Research Use Only. Not for use in diagnostic or therapeutic procedures.