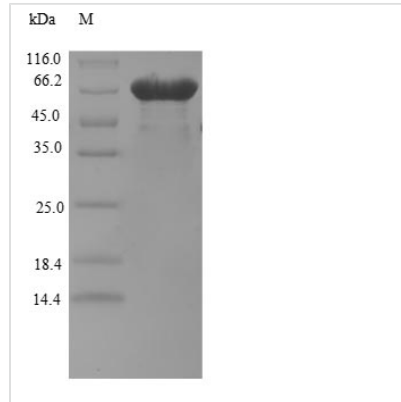


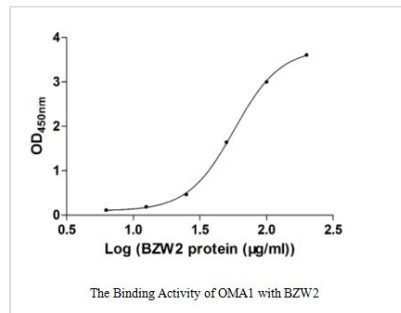


# Recombinant Human eIF5-mimic protein 1 (BZW2) (Active)

<b>Product Code</b>	CSB-EP896544HU
<b>Relevance</b>	May be involved in neuronal differentiation.
<b>Abbreviation</b>	Recombinant Human BZW2 protein (Active)
<b>Storage</b>	The shelf life is related to many factors, storage state, buffer ingredients, storage temperature and the stability of the protein itself. Generally, the shelf life of liquid form is 6 months at -20°C/-80°C. The shelf life of lyophilized form is 12 months at -20°C/-80°C.
<b>Uniprot No.</b>	Q9Y6E2
<b>Storage Buffer</b>	Tris-based buffer,50% glycerol
<b>Product Type</b>	Others
<b>Immunogen Species</b>	Homo sapiens (Human)
<b>Biological Activity</b>	Measured by its binding ability in a functional ELISA. Immobilized OMA1 at 5 µg/ml can bind human BZW2, the EC50 of human BZM2 is 45.42-72.22 µg/ml.
<b>Purity</b>	≥ 90% as determined by SDS-PAGE.
<b>Sequence</b>	MNKHQKPVLTGQRFKTRKRDEKEKFEPTVFRDTLVQGLNEAGDDLEAVAKFL DSTGSRLDYRRYADTLFDILVAGSMLAPGGTRIDDGDKTKMTNHCVFSANEDH ETIRNYAQVFNKLIRRYKYLEKAFEDEMKKLLLFLKAFSETEQTKLAMLSGILLG NGTLPATILTSLFTDSLVEKIGIAASFAVKLFKAWMAEKDANSVTSSLRKANLDK RLLELFPVNRQSVDFHFAKYFTDAGLKELSDFLRVQQSLGTRKELQKELQERLS QECPIKEVVLYVKEEMKRNDLPETAVIGLLWTCIMNAVEWNKKEELVAEQALK HLKQYAPLLAVFSSQGQSELILLQKVQEYCYDNIHFMKAFQKIVVLFYKADVLS EEAILKWYKEAHVAKGKSVFLDQMKKFVEWLQNAEEEESESEGEEN
<b>Research Area</b>	Cell Biology
<b>Source</b>	E.coli
<b>Target Names</b>	BZW2
<b>Expression Region</b>	1-419aa
<b>Notes</b>	Repeated freezing and thawing is not recommended. Store working aliquots at 4°C for up to one week.
<b>Tag Info</b>	N-terminal GST-tagged
<b>Mol. Weight</b>	75.2kDa
<b>Protein Length</b>	Full Length
<b>Image</b>	



(Tris-Glycine gel) Discontinuous SDS-PAGE (reduced) with 5% enrichment gel and 15% separation gel.



**Activity**  
 Measured by its binding ability in a functional ELISA. Immobilized OMA1 at 5 µg/ml can bind human BZW2, the EC<sub>50</sub> of human BZW2 is 45.42-72.22 µg/ml.

## Endotoxin

BZW2

## Shelf Life

The shelf life is related to many factors, storage state, buffer ingredients, storage temperature and the stability of the protein itself. Generally, the shelf life of liquid form is 6 months at -20°C/-80°C. The shelf life of lyophilized form is 12 months at -20°C/-80°C.