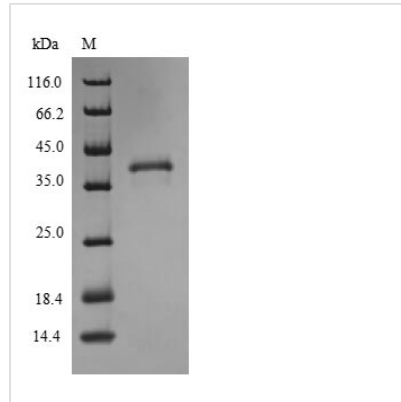




Recombinant Human High affinity copper uptake protein 1 (SLC31A1)

Product Code	CSB-CF021575HU
Relevance	High-affinity, saturable copper transporter involved in dietary copper uptake
Abbreviation	Recombinant Human SLC31A1 protein (Active)
Storage	The shelf life is related to many factors, storage state, buffer ingredients, storage temperature and the stability of the protein itself. Generally, the shelf life of liquid form is 6 months at -20°C/-80°C. The shelf life of lyophilized form is 12 months at -20°C/-80°C.
Uniprot No.	O15431
Storage Buffer	Tris-based buffer,50% glycerol
Product Type	Others
Immunogen Species	Homo sapiens (Human)
Purity	≥ 90% as determined by SDS-PAGE.
Sequence	MDHSHHMGMSYMDSNSTMQPSHHHPTTSASHSHGGGDSSMMMMPMTFYF GFKNVELLFSGLVINTAGEMAGAFVAVFLLAMFYEGLKIARESLLRKSQVSIRY NSMPVPGPNGTILMETHKTVGQQMLSFPHLLQTVLHIIQVVISYFLMLIFMTYNG YLCIAVAAGAGTGYFLFSWKKAVVVDITEHCH
Research Area	Others
Source	in vitro E.coli expression system
Target Names	SLC31A1
Expression Region	1-190aa
Notes	Repeated freezing and thawing is not recommended. Store working aliquots at 4°C for up to one week.
Tag Info	N-terminal 6xHis-SUMO-tagged
Mol. Weight	37.1kDa
Protein Length	Full Length
Image	



(Tris-Glycine gel) Discontinuous SDS-PAGE (reduced) with 5% enrichment gel and 15% separation gel.

Shelf Life

The shelf life is related to many factors, storage state, buffer ingredients, storage temperature and the stability of the protein itself.

Generally, the shelf life of liquid form is 6 months at -20°C/-80°C. The shelf life of lyophilized form is 12 months at -20°C/-80°C.