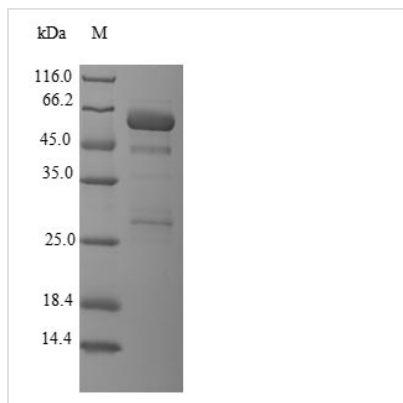




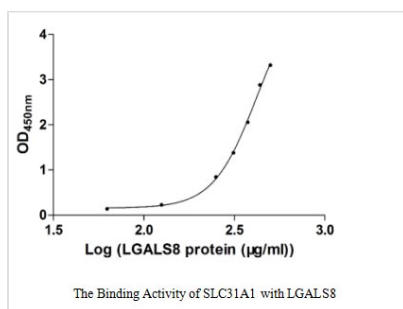
Recombinant Human Galectin-8 (LGALS8) (Active)

Product Code	CSB-EP012894HU
Relevance	Lectin with a marked preference for 3'-O-sialylated and 3'-O-sulfated glycans.
Abbreviation	Recombinant Human LGALS8 protein (Active)
Storage	The shelf life is related to many factors, storage state, buffer ingredients, storage temperature and the stability of the protein itself. Generally, the shelf life of liquid form is 6 months at -20°C/-80°C. The shelf life of lyophilized form is 12 months at -20°C/-80°C.
Uniprot No.	O00214
Product Type	Other
Immunogen Species	Homo sapiens (Human)
Biological Activity	Measured by its binding ability in a functional ELISA. Immobilized SLC31A1 at 5 µg/ml can bind human LGALS8, the EC50 of human LGALS8 is 373.90-524.30 µg/ml.
Purity	Greater than 90% as determined by SDS-PAGE.
Sequence	MMLSLNNLQNIINYNPVIVFGTIPDQLDPGTLIVIRGHVPSDADRFQVDLQNGSS MKPRADVAFHFNPRFKRAGCIVCNTLINEKWGREEITYDTPFKREKSFEIVIMV LKDKFQVAVNGKHTLLYGHRIGPEKIDTLGIYGKVNHSIGFSFSSDLQSTQASS LELTEISRENVPKSGTPQLRPLFAARLNTPMGPGRTVVVKGEVNANAKSFNVD LLAGKSKDIALHLNPRLNKAFVRNSFLQESWGEEERNITSFPFSPGMYFEMIIY CDVREFKQAVNGVHSLEYKHRFKELSSIDTLEINGDIHLLEVRWS
Research Area	Cancer
Source	E.coli
Target Names	LGALS8
Expression Region	1-317aa
Notes	Repeated freezing and thawing is not recommended. Store working aliquots at 4°C for up to one week.
Tag Info	N-terminal GST-tagged
Mol. Weight	62.8kDa
Protein Length	Full Length

Image



(Tris-Glycine gel) Discontinuous SDS-PAGE (reduced) with 5% enrichment gel and 15% separation gel.



Activity
Measured by its binding ability in a functional ELISA. Immobilized SLC31A1 at 5 µg/ml can bind human LGALS8, the EC₅₀ of human LGALS8 is 373.90-524.30 µg/ml.

Reconstitution

We recommend that this vial be briefly centrifuged prior to opening to bring the contents to the bottom. Please reconstitute protein in deionized sterile water to a concentration of 0.1-1.0 mg/mL. We recommend to add 5-50% of glycerol (final concentration) and aliquot for long-term storage at -20°C/-80°C. Our default final concentration of glycerol is 50%. Customers could use it as reference.

Shelf Life

The shelf life is related to many factors, storage state, buffer ingredients, storage temperature and the stability of the protein itself. Generally, the shelf life of liquid form is 6 months at -20°C/-80°C. The shelf life of lyophilized form is 12 months at -20°C/-80°C.