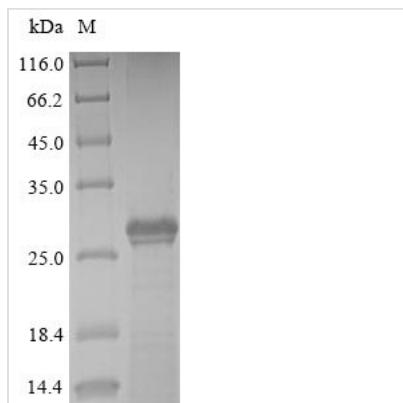




# Recombinant Human BPI fold-containing family A member 2 (BPIFA2)

<b>Product Code</b>	CSB-CF839308HU
<b>Relevance</b>	Has strong antibacterial activity against <i>P. aeruginosa</i> .
<b>Abbreviation</b>	Recombinant Human BPIFA2 protein
<b>Storage</b>	The shelf life is related to many factors, storage state, buffer ingredients, storage temperature and the stability of the protein itself. Generally, the shelf life of liquid form is 6 months at -20°C/-80°C. The shelf life of lyophilized form is 12 months at -20°C/-80°C.
<b>Uniprot No.</b>	Q96DR5
<b>Product Type</b>	Transmembrane Protein
<b>Immunogen Species</b>	Homo sapiens (Human)
<b>Purity</b>	≥ 90% as determined by SDS-PAGE.
<b>Sequence</b>	ESLLDNLGNDLSNVVDKLEPVLHEGLETVDNTLKGILEKLVVDLGVLQKSSAW QLAKQKAQEA EKLLNNVISKLLPTNTDIFGLKISNSLILDVKAEPIDDGKGLNLSF PVTANVTVAGPIIGQIINLKASLDLLTAVTIETDPQTHQPVAVLGECASDPTSISL SLLDKHSQIINKFVNSVINTLTKSTVSSLLQKEICPLIRIFIHSLDVNVIQQVVDNPQ HKTQLQTLI
<b>Research Area</b>	Developmental Biology
<b>Source</b>	in vitro E.coli expression system
<b>Target Names</b>	BPIFA2
<b>Protein Names</b>	Parotid secretory protein
<b>Expression Region</b>	19-249aa
<b>Notes</b>	Repeated freezing and thawing is not recommended. Store working aliquots at 4°C for up to one week.
<b>Tag Info</b>	Tag-Free
<b>Mol. Weight</b>	25.1kDa
<b>Protein Length</b>	Full Length of Mature Protein
<b>Image</b>	



(Tris-Glycine gel) Discontinuous SDS-PAGE (reduced) with 5% enrichment gel and 15% separation gel.

### Reconstitution

We recommend that this vial be briefly centrifuged prior to opening to bring the contents to the bottom. Please reconstitute protein in deionized sterile water to a concentration of 0.1-1.0 mg/mL. We recommend to add 5-50% of glycerol (final concentration) and aliquot for long-term storage at -20°C/-80°C. Our default final concentration of glycerol is 50%. Customers could use it as reference.

### Shelf Life

The shelf life is related to many factors, storage state, buffer ingredients, storage temperature and the stability of the protein itself. Generally, the shelf life of liquid form is 6 months at -20°C/-80°C. The shelf life of lyophilized form is 12 months at -20°C/-80°C.